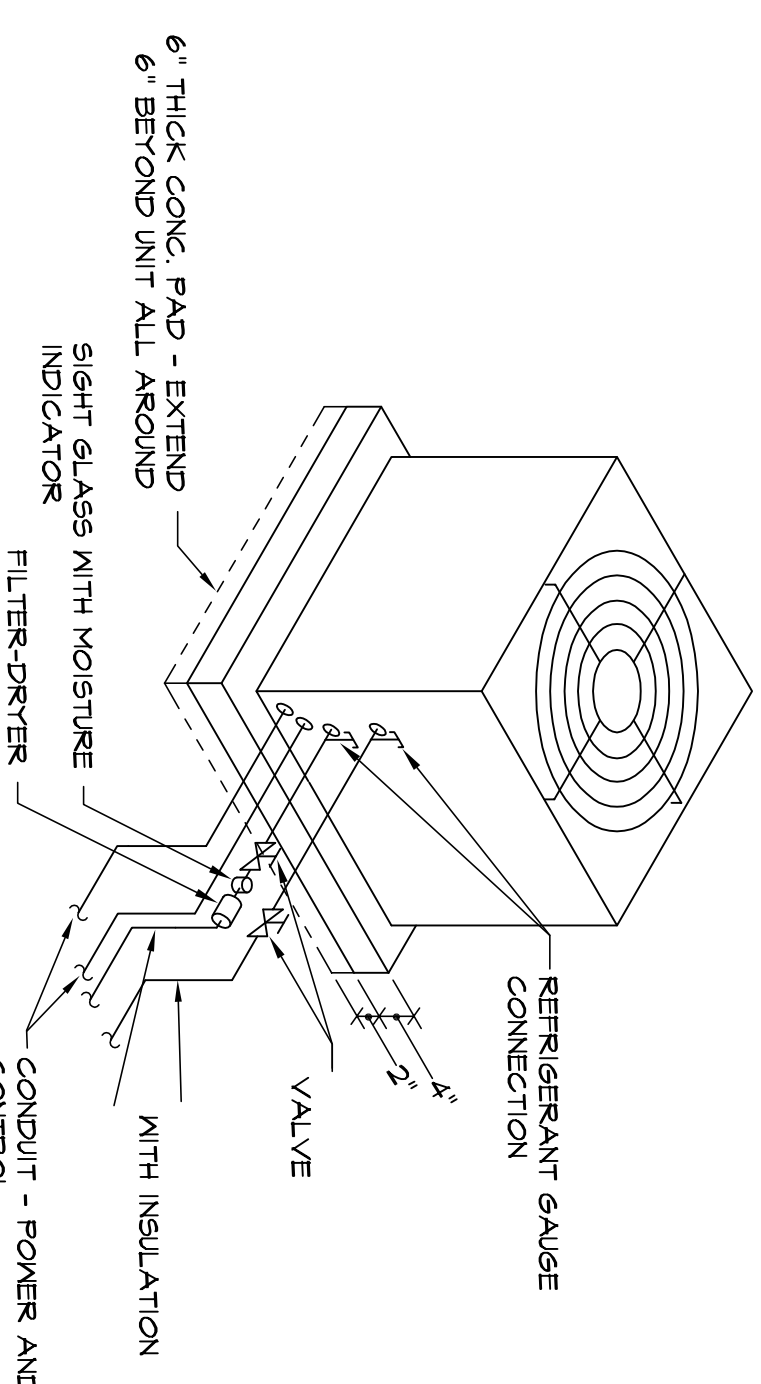


ROOFTOP UNIT SCHEDULE - HEAT PUMP						
MARK	CFM	ESP AIR CFM	TOTAL COOLING (MBTUH)	HEATING (MBTUH)	AUX. ELEC. HEAT (KW)	FAN HP
RTU-1	2000	0.6	46.2	57.6	0.0	1.0
RTU-2	1600	0.6	46.2	47.5	0.0	1.0
RTU-3	1000	0.6	36.7	30.0	0.0	1/2
TOTAL			129.1	135.1	0.0	3.0

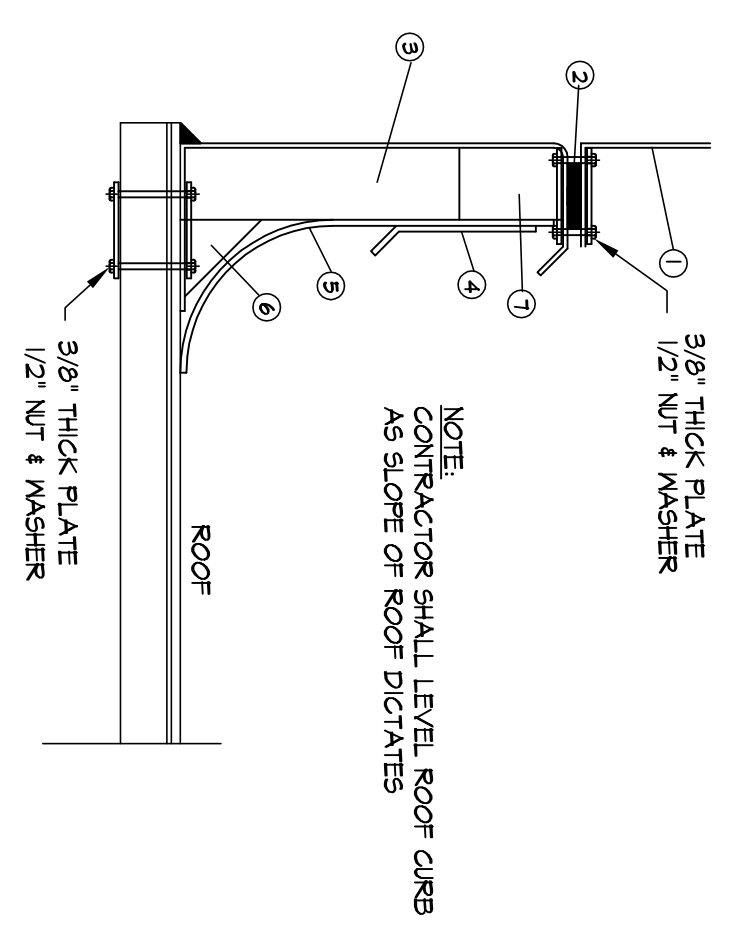
- NOTES:
1. COOLING CAPACITY AT 95° FDB CONDENSER ENTERING AIR TEMPERATURE, 67° FDB EVAPORATOR ENTERING AIR TEMPERATURE.
 2. HEAT PUMP HEATING CAPACITY BASED ON 70° F CONDENSER ENTERING AIR TEMPERATURE, 40° F EVAPORATOR ENTERING AIR TEMPERATURE.
 3. WEIGHT INCLUDES UNIT, ECONOMIZER, AND MANUFACTURER CURB.
 4. PROVIDE SINGLE POINT CONNECTION KIT FOR ELECTRIC HEATERS.
 5. REFER TO ELECTRICAL DRAWINGS FOR UNIT VOLTAGE AND PHASE.

SPLIT SYSTEM HEAT PUMP SCHEDULE									
AIR HANDLING UNITS					HEAT PUMP UNIT				
MARK	CFM	ESP AIR CFM	COOLING CAPACITY (MBTUH)	HEATING CAPACITY (MBTUH)	COP	RESISTANCE HEAT (KW)	FAN HP	MANUFACTURER (CARRIER)	MODEL
FQU-1	600	0.6	30.0	17.5	3.6	0.0	1/3	F4C4HF018	HP-1
FQU-2	1200	0.6	34.4	34.4	3.6	0.0	1/2	F4C4HF036	HP-2
FQU-3	1400	0.6	34.4	41.5	3.7	0.0	1/2	F4C4HF042	HP-3
TOTAL OUTSIDE AIR									

- NOTES:
1. COOLING CAPACITY AT 95° FDB CONDENSER ENTERING AIR TEMPERATURE, 67° FDB EVAPORATOR ENTERING AIR TEMPERATURE.
 2. HEAT PUMP HEATING CAPACITY BASED ON 70° F CONDENSER ENTERING AIR TEMPERATURE, 40° F EVAPORATOR ENTERING AIR TEMPERATURE.
 3. PROVIDE MANUFACTURER LONG-LINE APPLICATION KIT FOR REFRIGERANT PIPING LENGTHS GREATER THAN 50 FT.
 4. PROVIDE SINGLE POINT CONNECTION FOR ELECTRIC HEATERS.
 5. REFER TO ELECTRICAL DRAWINGS FOR UNIT VOLTAGE & PHASE.



AIR-COOLED CONDENSING UNIT OR HEAT PUMP UNIT - SLAB MOUNTED AT GRADE

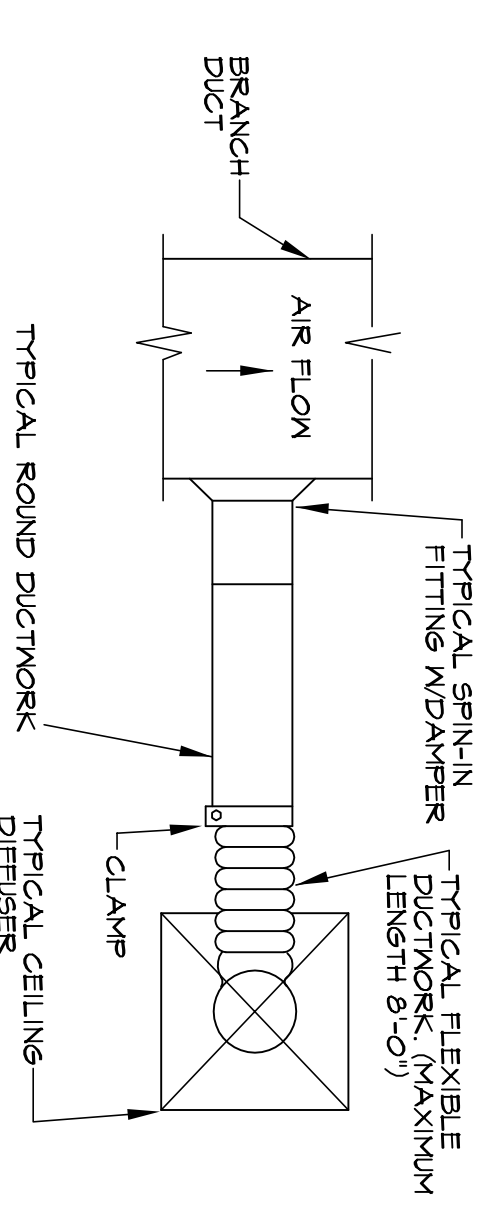


ROOF CURB DETAIL

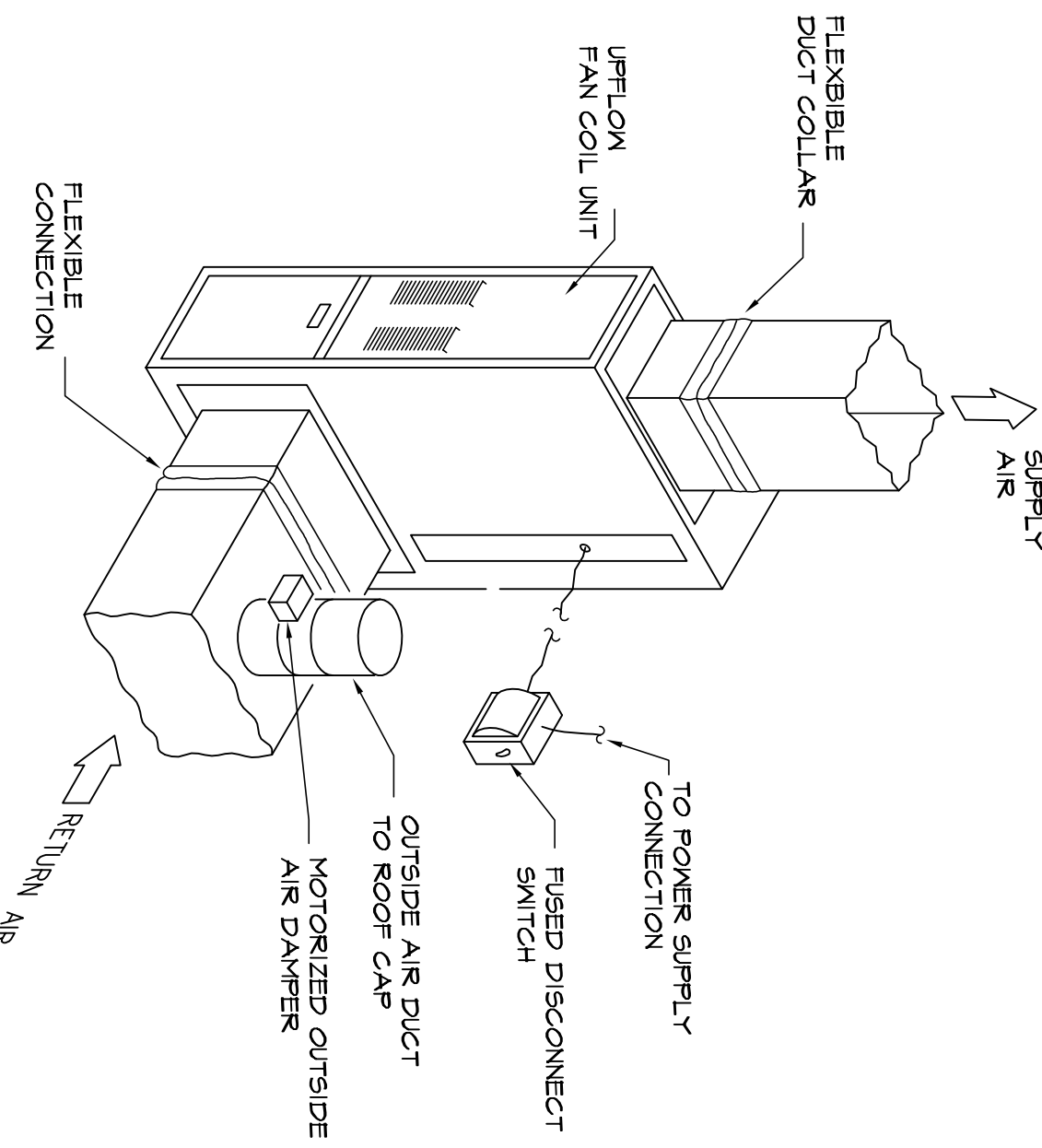
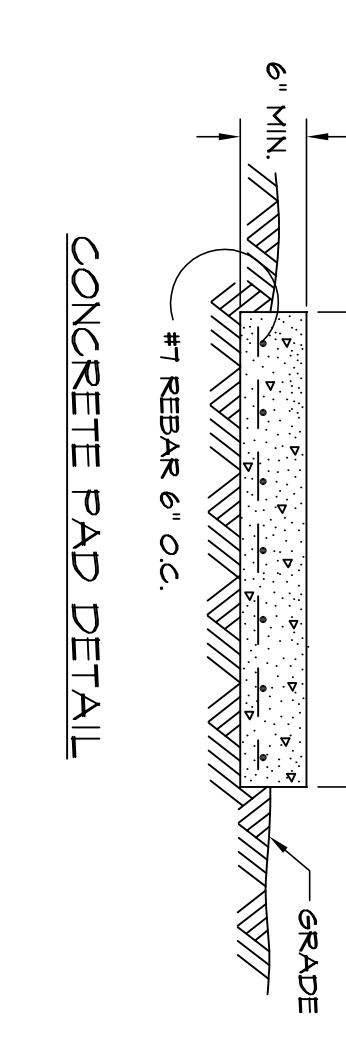
SCALE: NONE



TYPICAL FLEXIBLE DUCT TAKE-OFF DETAIL



CONCRETE PAD DETAIL



UPFLOW FAN COIL UNIT DETAIL

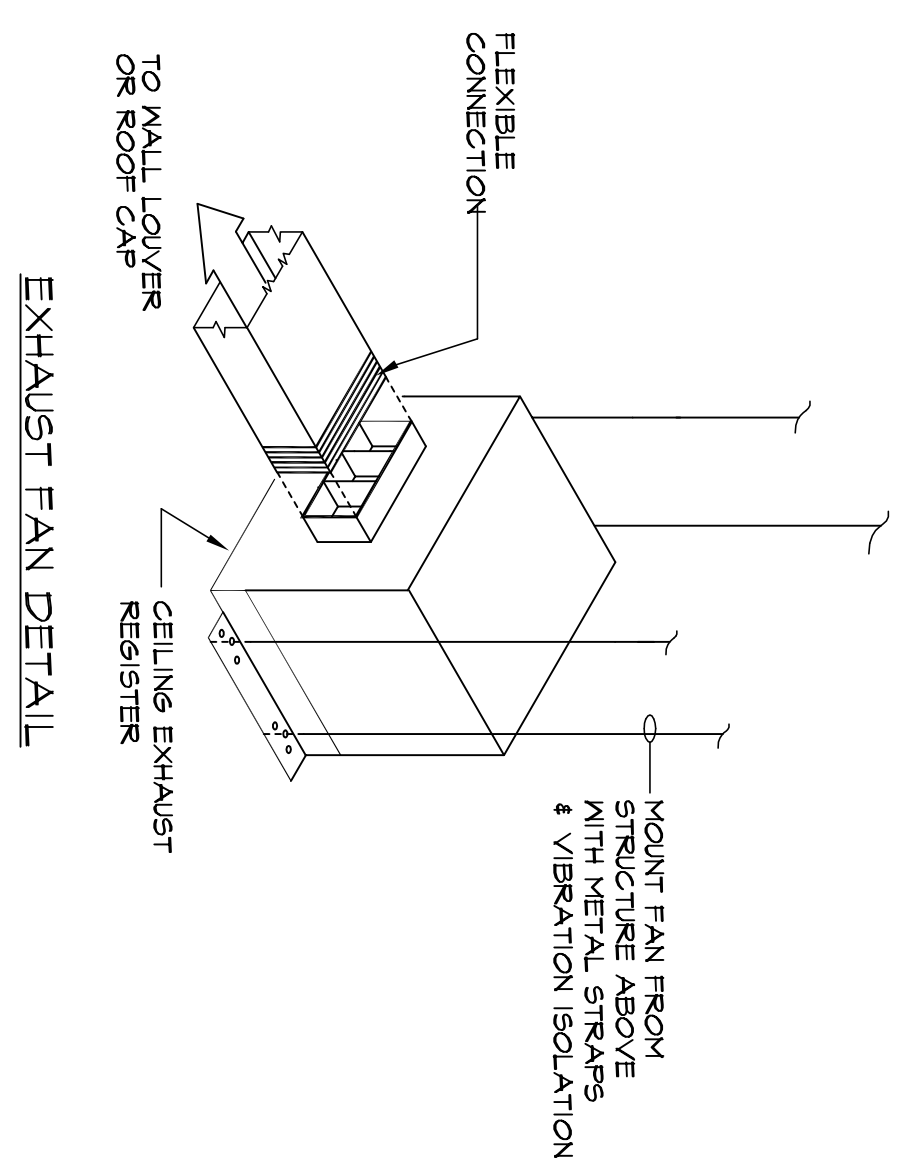
OCCUPANCY CLASSIFICATION					RELIABLES WORKSHOP	
VENTILATION SCHEDULE					BASED ON STANDARD MECHANICAL CODE TABLE 403.3	
AREA	SQ.FT.	MAX OCCUPANCY (PEOPLE/1000 SQ.FT.)	OCCUPANCY (PEOPLE or # TLTS)	OUTDOOR AIR REQ'D (per PERSON or TLT)	MINIMUM REQ'D OUTSIDE AIR CFM	
RESTROOMS	526	---	---	7.5 CFM/TLT. or URINAL	600	
CORRIDORS	249	---	---	0.1 CFM/SQ.FT.	24	
FELLOWSHIP	1504	---	105	7.5 CFM/PERSON	789	
FOYER	959	---	30	15 CFM/PERSON	165	
SANCTUARY	1189	---	102	7.5 CFM/PERSON	765	
CHANCEL	344	---	14	7.5 CFM/PERSON	145	
CHANGING ROOMS	80	---	---	2 CFM/SQ.FT.	16	
TOTAL					2501	

- NOTES:
1. MAXIMUM OCCUPANCY FOR CHANCEL/SANCTUARY/FELLOWSHIP/MULTIPURPOSE AREAS BASED ON SEATING COUNT PROVIDED BY ARCHITECT.
 2. OUTDOOR AIR QUANTITY REQUIRED FOR CLASSROOMS AND SANCTUARY/FELLOWSHIP BASED ON INC 61.2 IAQ PROCEDURE
 3. EXCEPTION TO CHAPTER 403 OF INC 2006 SECTION 403.2 IS CLAIMED FOR THIS PROJECT. THE ADDITION OF IONIZATION FILTERS IN EACH OF THE SANCTUARY AND CLASSROOM HVAC UNITS PROVIDES TREATED OUTSIDE AIR FILTERING HAZARDOUS PARTICULATE FROM THE SUPPLY AIR STREAM. THIS EXCEPTION ALLOWS THE REDUCTION OF OUTSIDE AIR REQUIREMENTS.

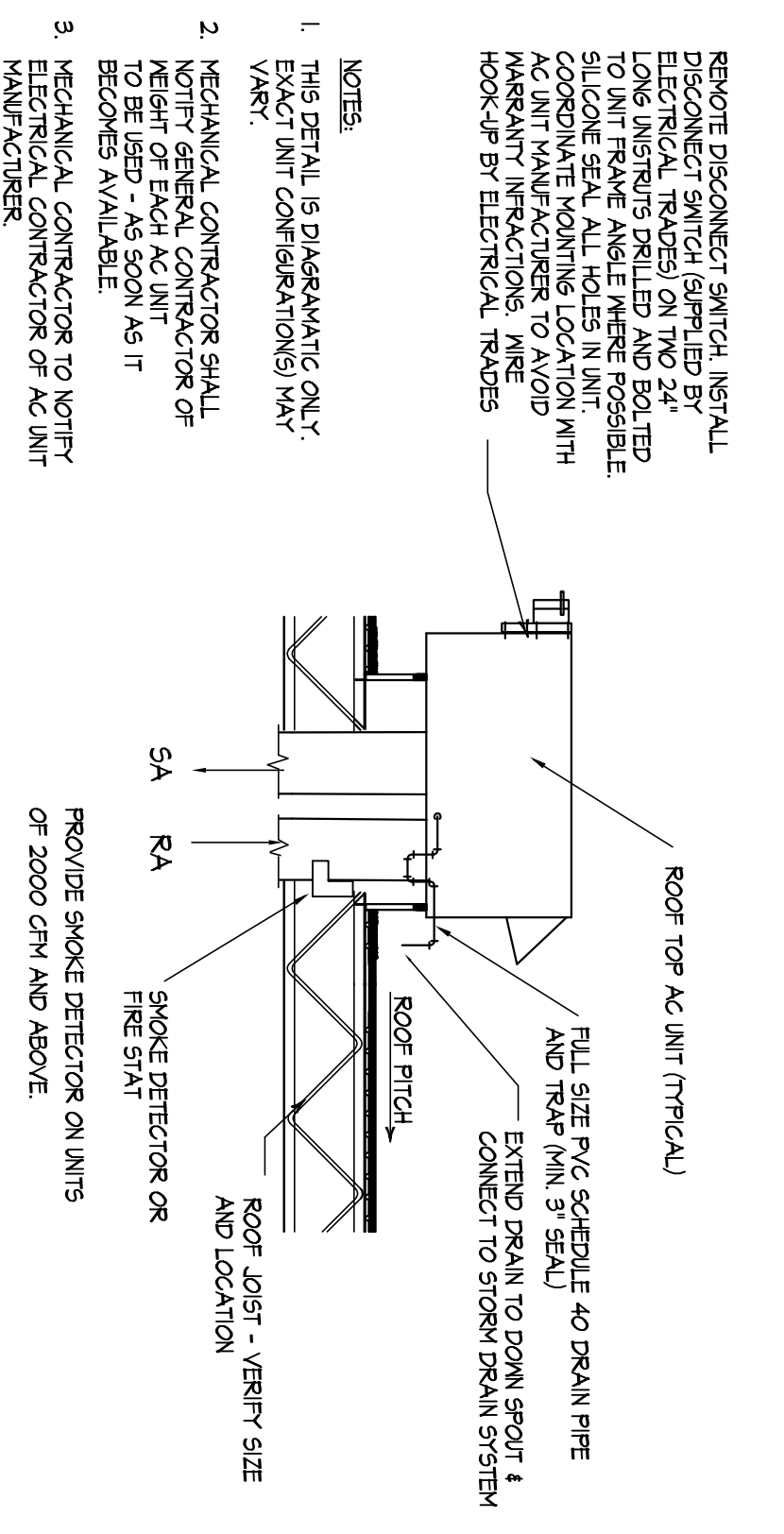
IONIZATION AIR PURIFIER SCHEDULE

MARK	CFM	NO. TUBES	MANUFACTURER (FLASMA AIR)	REMARKS
IP-1, IP-7	900-2000	1	100C	12
IP-6, IP-4	3000	2	200E	12

- NOTES:
1. INSTALL IN SUPPLY AIR DUCTWORK.



EXHAUST FAN DETAIL



ROOF TOP UNIT ELEVATION

SCALE: NONE

LOUVER SCHEDULE						
EQUIPMENT NO.	SERVICE	WIDTH	HEIGHT	THICKNESS OF WALL	MATERIAL	SCREEN
LV-1	OUTSIDE AIR	14"	12"	10"	ALUMINUM	YES
LV-2	OUTSIDE AIR	6"	12"	10"	ALUMINUM	YES
LV-3	OUTSIDE AIR	6"	12"	10"	ALUMINUM	YES

- NOTES:
1. COORDINATE LOCATION WITH ARCHITECT

REVISIONS	
1	DATE
2	DATE
3	DATE
4	DATE
5	DATE

rick jack/design

25 HEMLOCK RIDGE ROAD
LEICESTER, NORTH CAROLINA 28748
PH: 828-683-7348 FAX 828-683-9202
email: rick@rickjackdesign.com

new facility for:

washington seventh day baptist church

CRITTENDEN @ 16TH, WASHINGTON, D.C.

project no. **2K70609**

drawn by: **ZB** ink by: **TJW**

date: **AUG. 18, 2008**

scale: **AS SHOWN**

sheet no. **M12**