

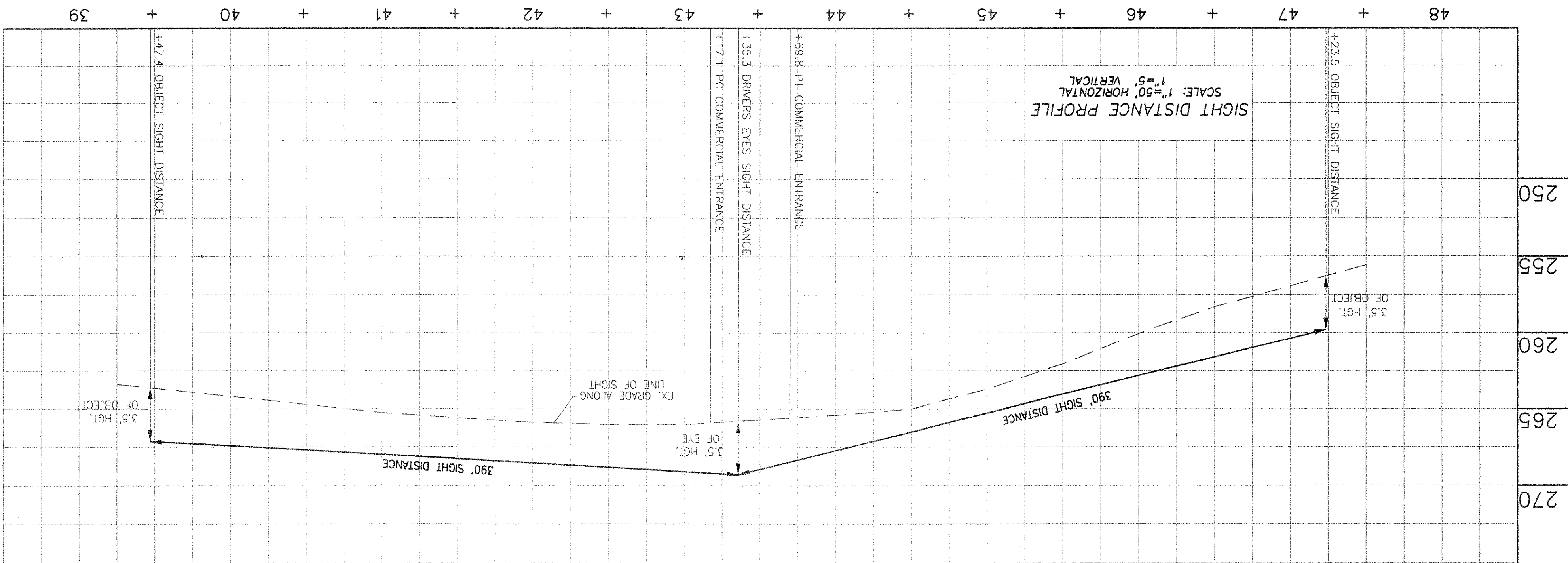
**NOTES:**

1. THE PROPOSED FRONTAGE IMPROVEMENTS FOR RITCHE ROAD ARE TO BE CONSTRUCTED BY PRINCE GEORGES COUNTY UNDER CAPITAL IMPROVEMENT PROJECT NUMBER PD666751.

**UTILITY CERTIFICATION**

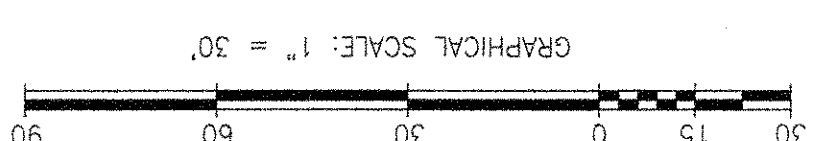
I HEREBY CERTIFY THAT THE EXISTING AND/OR PROPOSED UNDERGROUND UTILITY INFORMATION SHOWN HEREON HAS BEEN CAREFULLY DULY CHECKED FROM UTILITY COMPANY RECORDS. FURTHER THAT THIS PROJECT HAS BEEN CAREFULLY COORDINATED WITH EACH UTILITY COMPANY AND ALL AVAILABLE UNDERGROUND UTILITY INFORMATION RELATIVE TO THE PROJECT HAS BEEN SOLICITED FROM THEM.

ROBERT E. WILLIAMS, JR.  
REGISTERED PROFESSIONAL ENGINEER  
MD #26031  
DATE 11/26/07

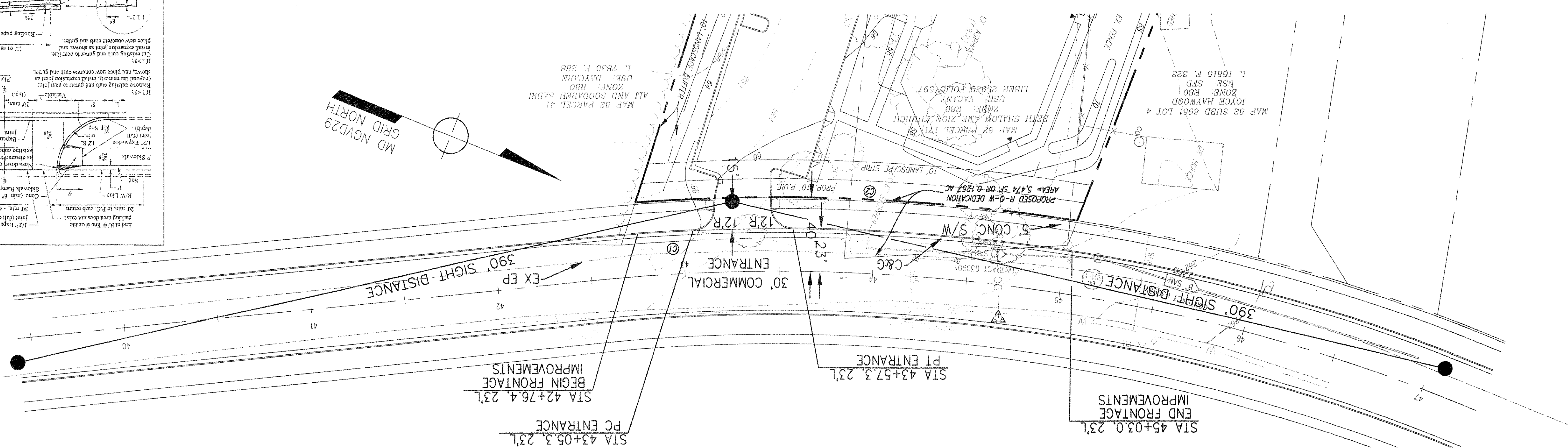


CURVE TABLE

CURVE	LENGTH	RADIUS	DELTA	TANGENT	CHORD	CHORD BEARING
C1	120.02'	1118.00'	60.903°	60.07'	119.96'	N24°04'09"E
C2	236.13'	995.00'	13.3551°	118.62'	235.58'	S19°46'02"E



**POSTED SPEED - 35 MPH  
VARIABLE WIDTH RW  
RITCHE ROAD**



**CAUTION - NOTICE TO CONTRACTOR**

THE CONTRACTOR IS SPECIALLY CAUTIONED THAT THE LOCATION AND/OR ELEVATION OF EXISTING UTILITIES AS SHOWN ON THESE PLANS IS BASED ON RECORDS OF THE VARIOUS UTILITY COMPANIES AND, WHERE POSSIBLE, MEASUREMENTS TAKEN IN THE FIELD. THE INFORMATION IS NOT TO BE RELIED ON AS BEING EXACT OR COMPLETE. THE CONTRACTOR MUST CALL THE APPROPRIATE UTILITY COMPANY AT LEAST 48 HOURS BEFORE ANY EXCAVATION TO REQUEST EXACT FIELD LOCATION OF UTILITIES. IT SHALL BE THE RESPONSIBILITY OF THE CONTRACTOR TO RELOCATE ALL EXISTING UTILITIES WHICH CONFLICT WITH THE PROPOSED IMPROVEMENTS SHOWN ON THE PLANS AND TO VERIFY THE EXACT LOCATION OF ALL EXISTING UTILITIES PRIOR TO COMMENCEMENT OF CONSTRUCTION ACTIVITIES.

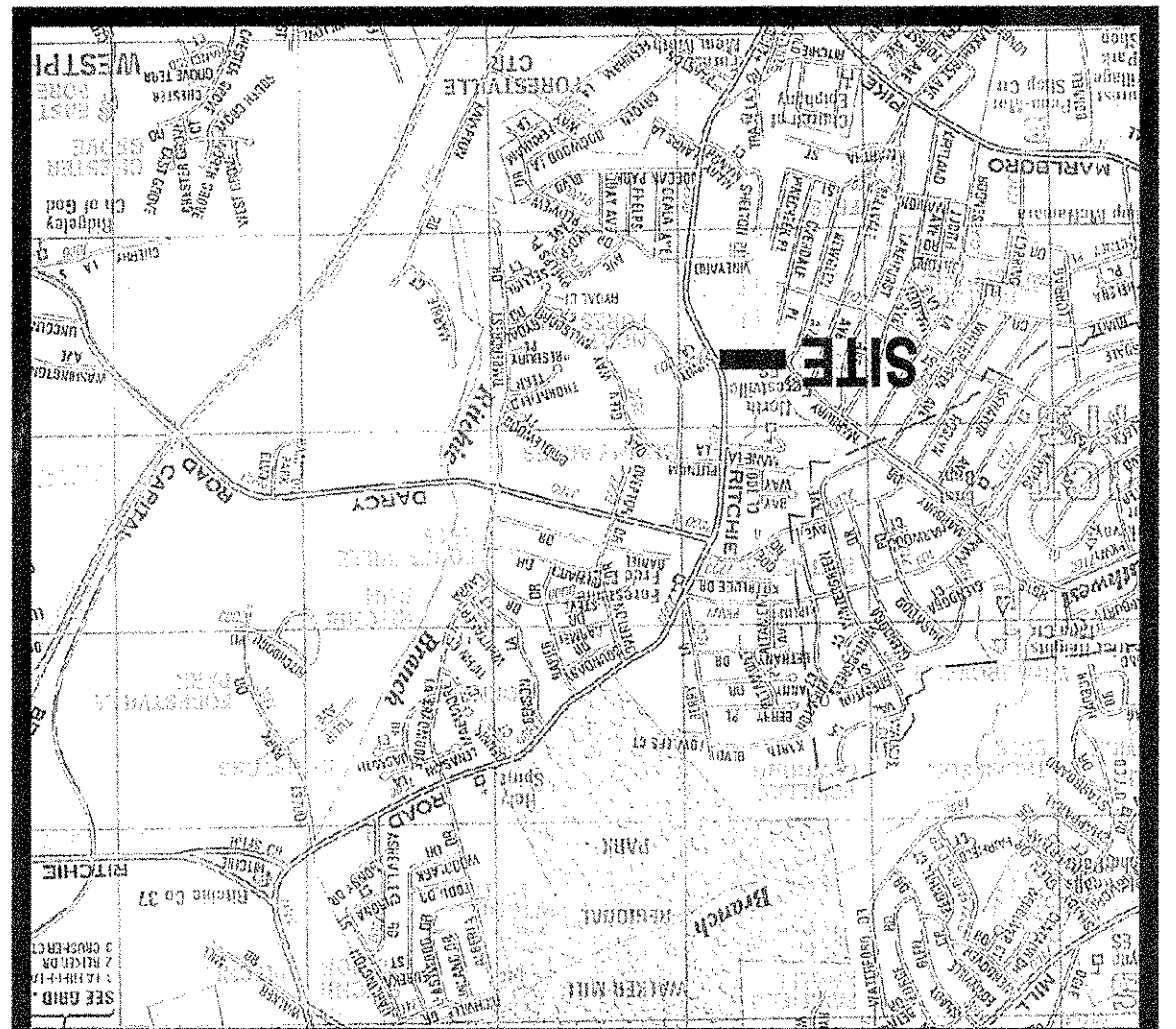
DEPARTMENT OF PUBLIC WORKS AND TRANSPORTATION  
(DPW&T)  
ENGINEERING AND INSPECTION SERVICES DIVISION  
PRINCE GEORGE'S COUNTY, MARYLAND

BY: \_\_\_\_\_  
DISTRICT ENGINEER

APPROVAL DATE: \_\_\_\_\_  
PAVING  DRAINAGE

PERMIT NUMBER: \_\_\_\_\_  
LOTS/BLOCKS: \_\_\_\_\_

**VICINITY MAP**



DEPARTMENT OF TRANSPORTATION  
Prince George's County, MD

PROPOSED: \_\_\_\_\_  
DATE: \_\_\_\_\_  
APPROVED BY: \_\_\_\_\_

2004 (Full Reveal) Driveway Entrance  
SID

172005

1. New entrances shall not be closer than 12' to the nearest existing property line.  
2. All drive way entrances shall be constructed in accordance with the Federal accessibility guidelines of the Americans with Disabilities Act.  
3. Entrances may be constructed perpendicular to, or at an angle (90° min.), measured from the centerline of roadway, facing in proper flow.  
4. Entrances shall be constructed perpendicular to, or at an angle (90° min.), measured from the centerline of roadway, facing in proper flow.  
5. No vehicular driveway aprons may be constructed within or partially within any intersection curb cut.  
6. Expansion drives will be required where driveway aprons are constructed, expansion joint channels are not located in the driveway apron and curb cut may be power inaccessible.  
7. Driveway aprons and curb cut may be power inaccessible.

General Notes:  
1. All drive way entrances shall be constructed in accordance with the Federal accessibility guidelines of the Americans with Disabilities Act.  
2. All drive way entrances shall be constructed in accordance with the Federal accessibility guidelines of the Americans with Disabilities Act.  
3. Entrances may be constructed perpendicular to, or at an angle (90° min.), measured from the centerline of roadway, facing in proper flow.  
4. Entrances shall be constructed perpendicular to, or at an angle (90° min.), measured from the centerline of roadway, facing in proper flow.  
5. No vehicular driveway aprons may be constructed within or partially within any intersection curb cut.  
6. Expansion drives will be required where driveway aprons are constructed, expansion joint channels are not located in the driveway apron and curb cut may be power inaccessible.  
7. Driveway aprons and curb cut may be power inaccessible.

REVISIONS:

DATE: AUGUST 2007  
SCALE: 1"=30'  
DRAWING NAME: 19D09-SDP-REV  
PROJECT: STORM DRAIN AND PAVING PLAN  
BETH SHALOM AME  
ZION CHURCH  
6TH ELECTION DISTRICT  
PRINCE GEORGE'S COUNTY, MARYLAND

FILE NO. MDPG-19D09-01  
SHEET 1 OF 2

Williams Enterprises Incorporated  
18 Mosby Lane Stafford, Virginia 22556  
540-286-3710 and 540-286-0345 Fax  
wein@ingres.net

WE Inc.

WARDER  
Your Church Builder  
Phone: (301) 868-5900  
Toll Free: (800) 732-7266  
Fax: (301) 868-8740  
www.wardergroup.com