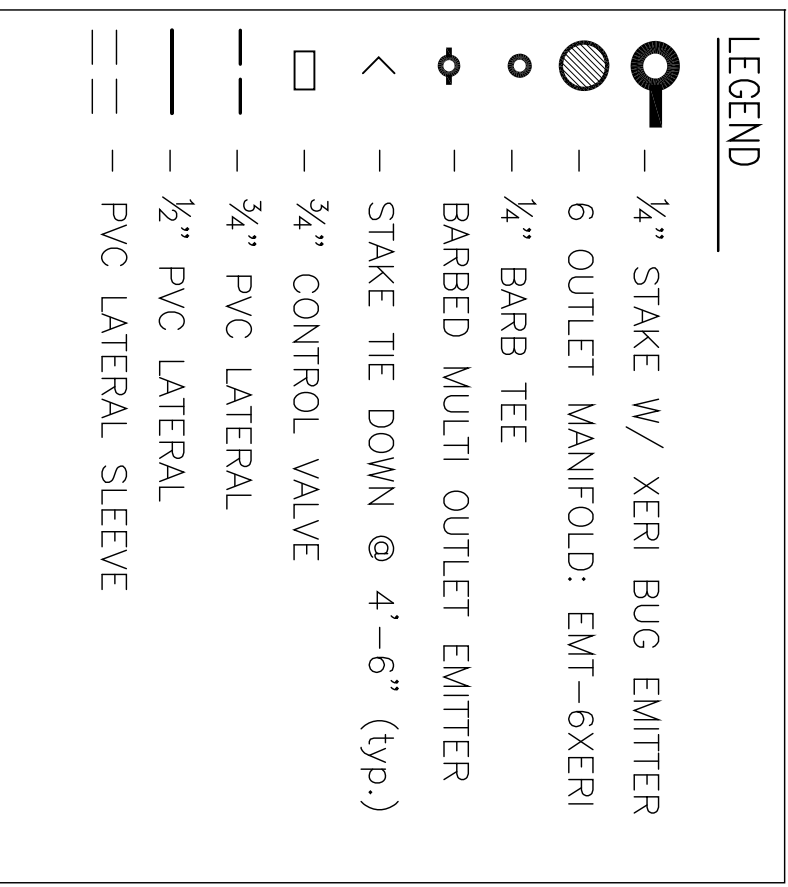


NOTES:  
 (1) LATERAL AND EMITTER SPACING DEPENDS ON SOIL TYPE.

### LANDSCAPE DRIPLINE LATERALS

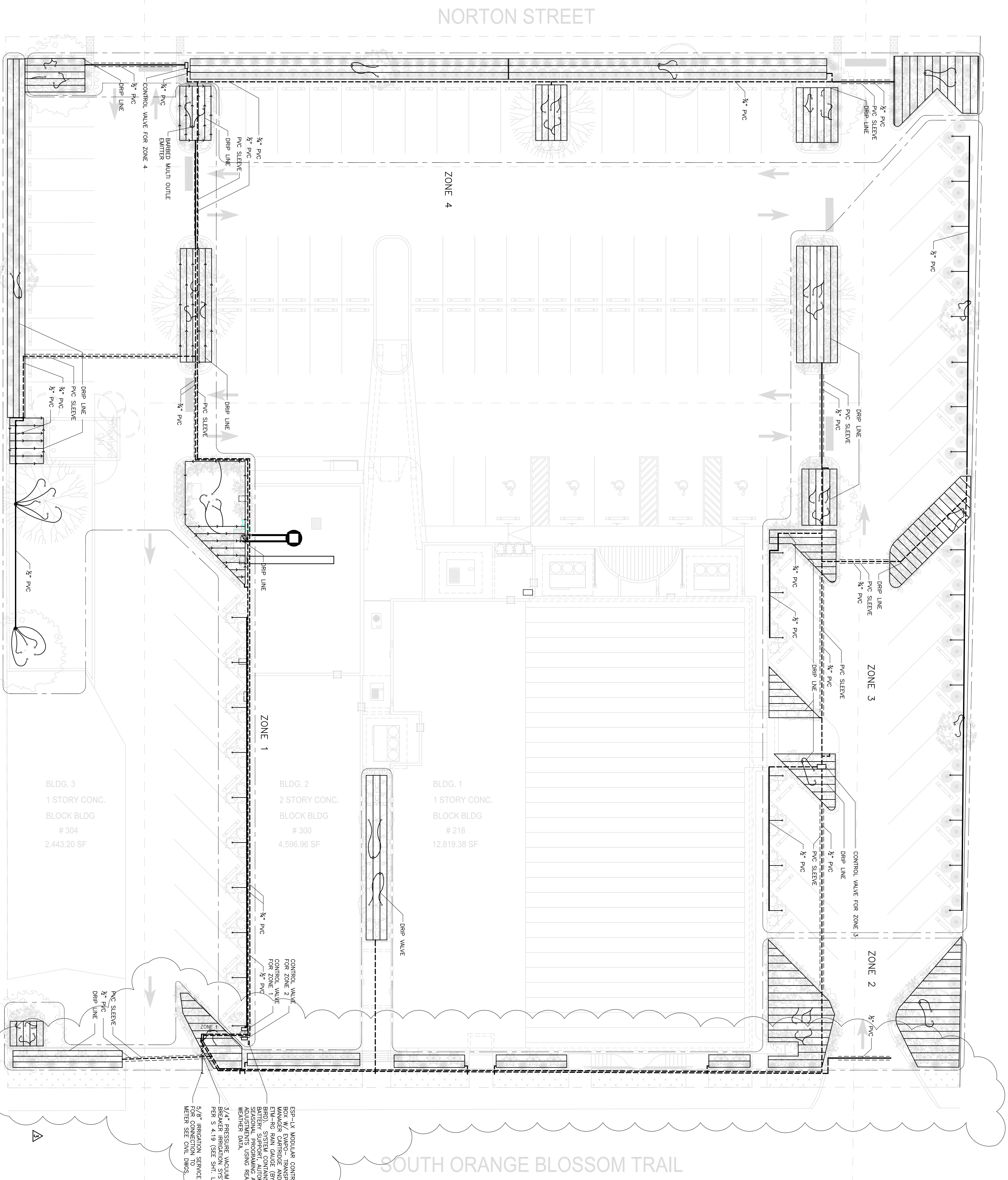


### IRRIGATION SCHEDULE

1. CONTRACTOR SHALL SUBMIT SHOPDRAWINGS, CALCULATIONS AND SPECIFICATIONS OF THE SYSTEM TO BE INSTALLED. SUBMITTAL SHALL BE APPROVED BY ARCHITECT/ENGINEER PRIOR TO PURCHASE AND INSTALLATION OF SYSTEM.
2. CONTRACTOR SHALL PERFORM A PRESSURE TEST AT METER PRIOR TO DESIGN OF SYSTEM AND CONFIRM SOIL TYPE AND OTHER FIELD CONDITIONS. THE PROPOSED DESIGN ASSUMED A FINE SOIL TYPE, AN EMITTER SPACING OF 24" AND EMITTER FLOW RATE OF .6 GPH.
3. A PRESSURE REGULATOR SHALL BE INSTALLED AFTER THE BACKFLOW PREVENTER OR AT THE CONTROL ZONE TO ENSURE PROPER WORKING PRESSURE AND FLOW RATE. SYSTEM PRESSURE SHALL NOT EXCEED 80 PSI. COORDINATE WORKING FLOW RATE REQUIREMENTS FOR ALL COMPONENTS.
4. PRIOR TO FINAL ACCEPTANCE CONTRACTOR SHALL DEMONSTRATE AUTOMATIC OPERATION OF SYSTEM, PROGRAM AND LABEL CONTROLLER, AND PROVIDE OWNER WITH AS BUILT DOCUMENTATION, UPON FINAL APPROVAL FROM OWNER. CONTRACTOR SHALL WARRANT SYSTEM FOR ONE FULL YEAR. SEE SHEET L-3 FOR ADDITIONAL INFORMATION. ALL DISCREPANCIES SHALL BE BROUGHT TO THE ARCHITECT'S ATTENTION PRIOR TO PROCEEDING WITH DESIGN OR INSTALLATION.

**NOTE:**

- PIPE LESS THAN 1-1/2" DIA. SHALL BE PVC SCHEDULE 40.
- PIPE 1-1/2" DIA. & LARGER SHALL BE SCHEDULE 80.
- SPRINKLER CONTRACTOR SHALL ADJUST SPRINKLER HEAD SPAY TO PREVENT OVER SPRAY ONTO ADJACENT PROPERTIES, PARKING AREAS, DRIVEWAYS AND SIDEWALKS.
- FOR IRRIGATION NOTES SEE SHEET L-3.



ES- LX MODULE CONTROLLER IN UNUSUAL POSITION AND 1/2" METER SYSTEM CONTROLLER. CONTRACTOR SHALL VERIFY ALL AUTOMATIC SYSTEMS USING REAL-TIME MONITORING. CONTRACTOR SHALL PROVIDE OPERATIONAL SYSTEM PER 5.4.19 (SEE SHEET L-3) WATER SET POINTS.

### FIRST HAITIAN FREE CHURCH OF NAZARENE

First Haitian Free Church of Nazarene by Faith  
 N  
 ORLANDO, FLORIDA

**RAMOSMARTINEZ**  
 ARCHITECTS, INC. AA 26000528

MIAMI: 521 N.W. 12th AVENUE, MIAMI, FL 33136  
 TELEPHONE: 305-548-3220  
 FACSIMILE: 305-548-3220  
 WEBSITE: www.marq.com

NEW YORK: 11 ERIE STREET, JERSEY CITY, NJ 07302  
 305-548-3006

**L-2**

COMM. NO.: 08-07  
 DATE: 15 JAN 2009  
 DRAWN BY:  
 CHECKED BY:

IRRIIGATION PLAN  
 REVISIONS:  
 0.01: Revision

308 SOUTH ORANGE BLOSSOM TRAIL, ORLANDO, FLORIDA