

FROM STR	TO STR	TYPE OF STR	FRICION	SLOPE	DIAM	LENGTH	AREA	PERCENT	COEFF	CONCENTRATION	INTENSITY	DISCHARGE
17	INLET	010	0.10	0.010	15"	15'	0.015	0.010	0.015	0.010	0.015	0.015
16	MH	010	0.015	0.010	15"	15'	0.015	0.010	0.015	0.010	0.015	0.015
15	MH	010	0.015	0.010	15"	15'	0.015	0.010	0.015	0.010	0.015	0.015
14	MH	010	0.015	0.010	15"	15'	0.015	0.010	0.015	0.010	0.015	0.015
13	INLET	010	0.015	0.010	15"	15'	0.015	0.010	0.015	0.010	0.015	0.015
11	MH	010	0.015	0.010	15"	15'	0.015	0.010	0.015	0.010	0.015	0.015
10	EW	010	0.015	0.010	15"	15'	0.015	0.010	0.015	0.010	0.015	0.015

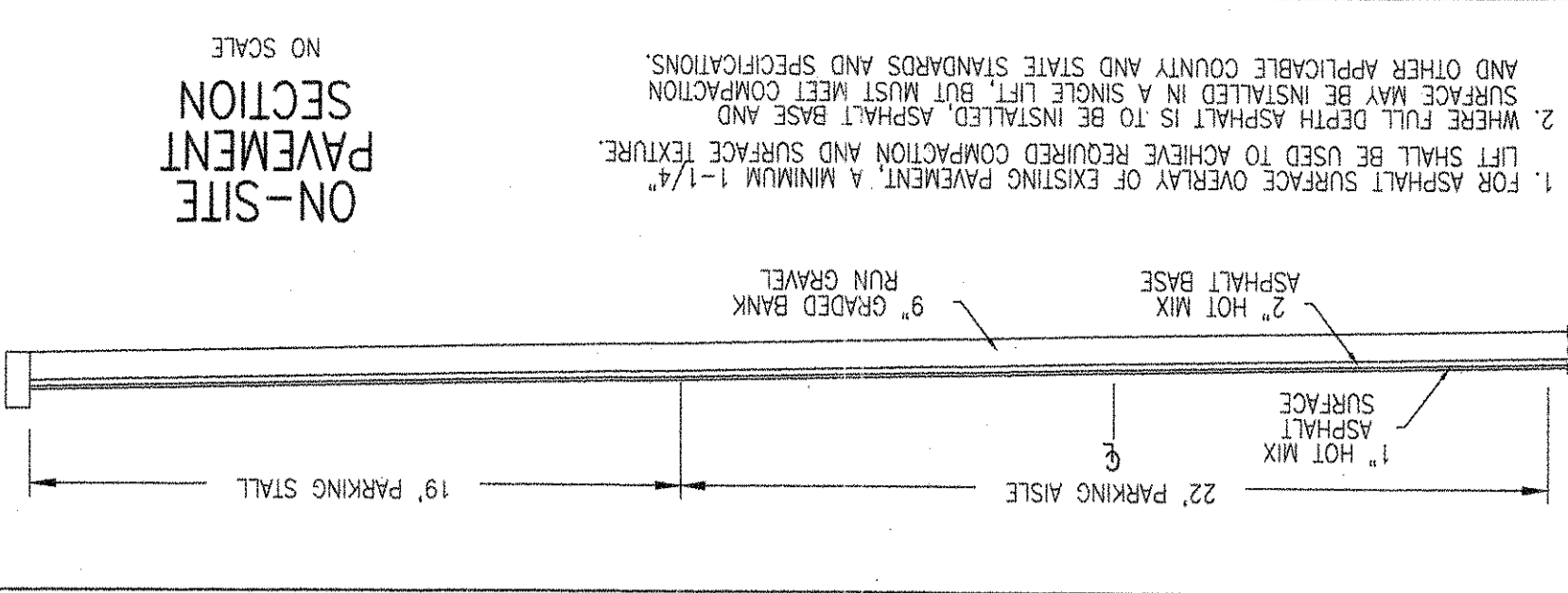
$$F_s = 4.66n^{0.2}$$

$$F_s = 0.16^{0.2}$$

NO	TYPE	SPECIFICATION	TOP ELEV.	OUT INV.	IN INV.	SUMP AND MAINTAINED BY
17	INLET	DOUBLE COG PER SHA STD MD-383.21	244.50	241.00	242.25	242.25 - PRIVATE
16	MH	MANHOLE PER SHA STD MD-383.21	241.95	237.70	-	237.70 - PRIVATE
15	RISER	CMP RISER	242.70	231.30	-	- PRIVATE
14	JB	CONC. JUNCTION BOX PER SHA STD MD-386.11	240.60	230.45	-	230.45/236.95 - PRIVATE
13	INLET	SINGLE COG PER SHA STD MD-374.31	240.90	237.00	-	237.00 - PRIVATE
11	MH	MANHOLE PER SHA STD MD-383.21	237.70	224.15	-	224.15 - PRIVATE
10	EW	15" CONC. END WALL PER SHA STD MD-384.01	-	222.00	-	- PRIVATE

DESCRIPTION	CLASS	QUANTITY	AND MAINTAINED BY
6" PERFORATED HDPE	TYPE S	333 L.F.	PRIVATE
6" SOLID HDPE	TYPE S	78 L.F.	PRIVATE
19" HDPE	TYPE S	196 L.F.	PRIVATE
84" CMP	TYPE S	188.5 L.F.	PRIVATE

FROM STR	TO STR	TYPE OF STR	NO	TYPE	DESCRIPTION	CLASS	QUANTITY	AND MAINTAINED BY
17	COG	010	1.39	0.66	0.92	0.92	0.92	0.92
16	MH	010	1.39	0.66	0.92	0.92	0.92	0.92
13	JB	010	0.57	0.58	0.33	1.25	5	5
11	MH	010	0.57	0.58	0.33	1.25	5	5
10	EW	010	-	-	-	-	-	-



CAUTION - NOTICE TO CONTRACTOR

THE CONTRACTOR IS SPECIFICALLY CAUTIONED THAT THE LOCATION AND/OR ELEVATION OF EXISTING UTILITIES AS SHOWN ON THESE PLANS IS BASED ON RECORDS OF THE WATERS UTILITY COMPANIES AND, WHERE POSSIBLE, MEASUREMENTS TAKEN IN THE FIELD. THE INFORMATION IS NOT TO BE RELIED ON AS BEING EXACT OR COMPLETE. THE CONTRACTOR MUST CALL THE APPROPRIATE UTILITY COMPANY AT LEAST 48 HOURS BEFORE ANY EXCAVATION TO REQUEST EXACT FIELD LOCATION OF UTILITIES. IT SHALL BE THE RESPONSIBILITY OF THE CONTRACTOR TO IMPROVE EXISTING UTILITIES WHICH CONFLICT WITH THE PROPOSED IMPROVEMENTS SHOWN ON THE PLANS AND TO VERIFY THE EXACT LOCATION OF ALL EXISTING UTILITIES PRIOR TO COMMENCEMENT OF CONSTRUCTION ACTIVITIES.

INLET	DRAIN	NO	TYPE	AREA	LN FT	ACRES	C	I	Q	CARRY OVER	Q1	GUTTER SLOPE	SPREAD	L	L/L	Q/O	BYPASS	Q	INTER	STR #	H	Q/L	H/H	H	SPREAD	REMARKS
17	COG	4.3	0.57	0.68	9.72	3.77	-	-	-	-	-	-	-	-	-	-	-	-	-	-	-	-	-	-	-	WSE(100)=240.10
13	COG	4.3	0.57	0.68	9.72	3.77	-	-	-	-	-	-	-	-	-	-	-	-	-	-	-	-	-	-	-	WSE(100)=244.20

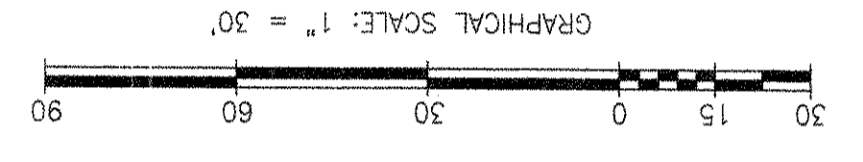
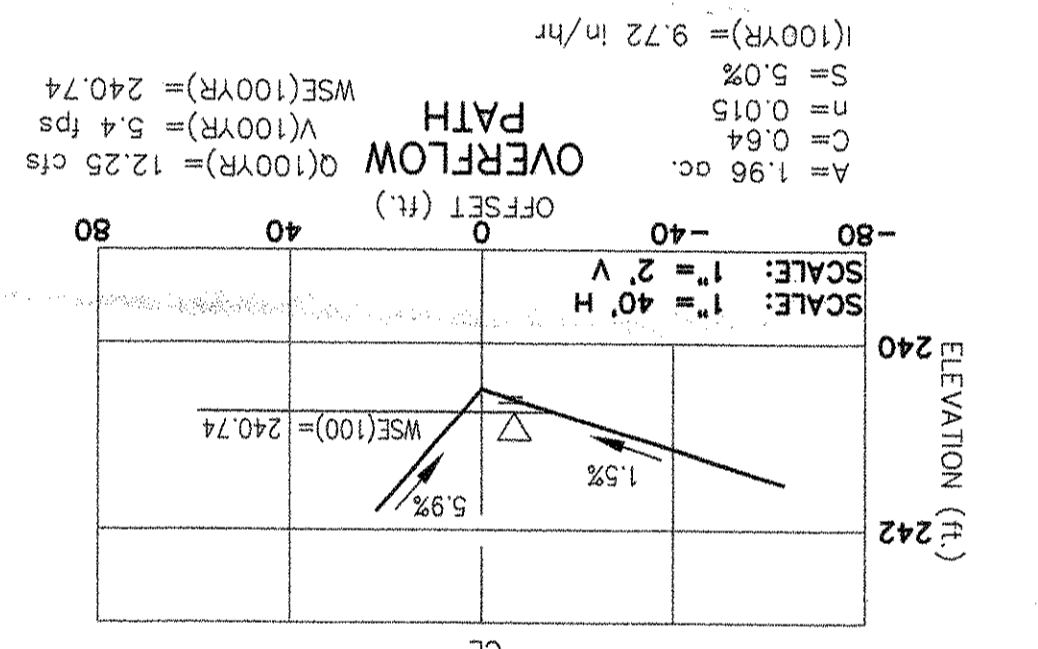
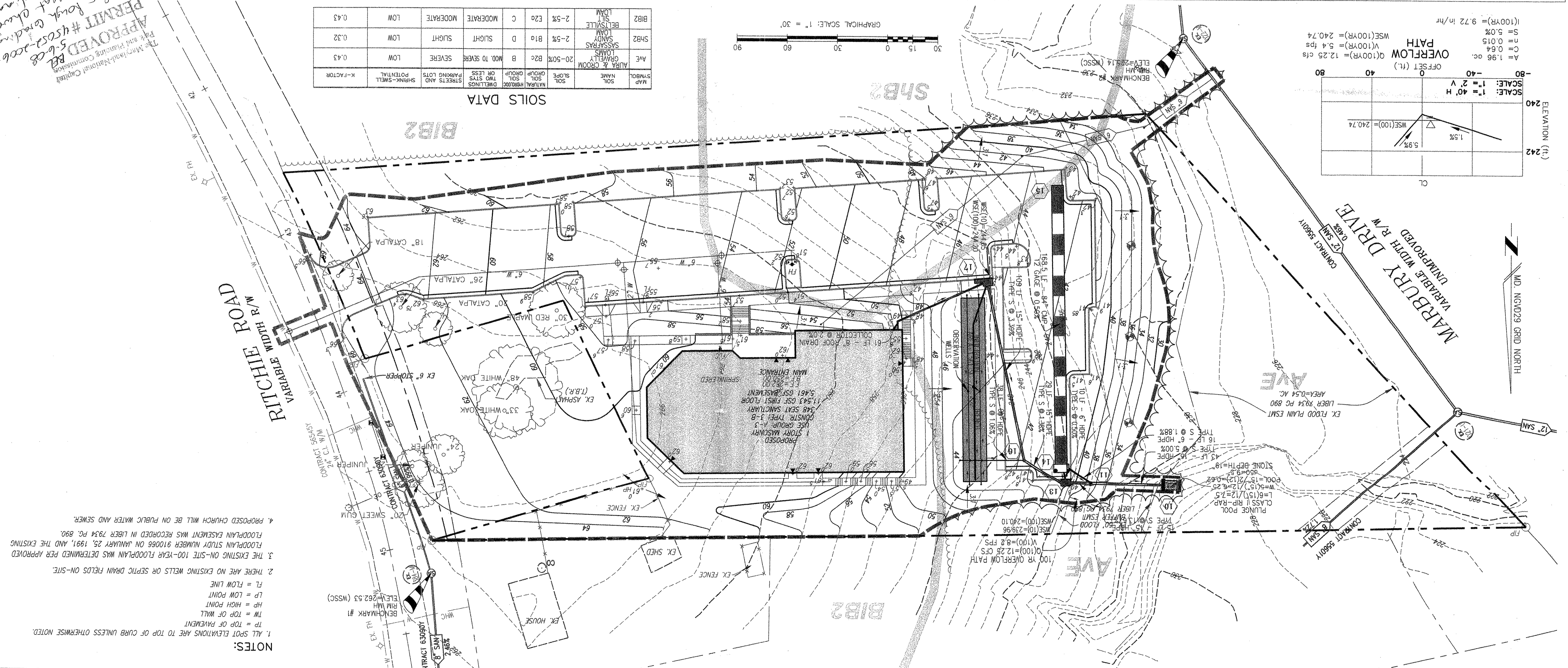
STORM INLET COMPUTATIONS (100 YR)

INLET	DRAIN	NO	TYPE	AREA	LN FT	ACRES	C	I	Q	CARRY OVER	Q1	GUTTER SLOPE	SPREAD	L	L/L	Q/O	BYPASS	Q	INTER	STR #	H	Q/L	H/H	H	SPREAD	REMARKS
17	COG	4.3	0.57	0.68	7.08	2.34	-	-	-	-	-	-	-	-	-	-	-	-	-	-	-	-	-	-	-	WSE(10)=239.96
13	COG	4.3	0.57	0.68	7.08	2.34	-	-	-	-	-	-	-	-	-	-	-	-	-	-	-	-	-	-	-	WSE(10)=244.05

STORM INLET COMPUTATIONS (10 YR)

MAP SYMBOL	SOIL NAME	PERCENT SAND	PERCENT SILT	PERCENT CLAY	GROUP	PLASTICITY INDEX	SHRINKAGE POTENTIAL	K-FACTOR
AE	ALFA & CRODM	20-50%	B2c	B	MO. TO SEVERE	SEVERE	LOW	0.43
SB2	SASSPARAS	2-5%	B1a	D	SLIGHT	SLIGHT	LOW	0.32
BIB2	BECKVILLE	2-5%	E2a	C	MODERATE	MODERATE	LOW	0.43

SOILS DATA



- NOTES:
1. ALL SPOT ELEVATIONS ARE TO TOP OF CURB UNLESS OTHERWISE NOTED.
 2. THERE ARE NO EXISTING WELLS OR SEPTIC DRAIN FIELDS ON-SITE.
 3. THE EXISTING ON-SITE 100-YEAR FLOODPLAIN WAS DETERMINED PER APPROVED FLOODPLAIN STUDY NUMBER 910066 ON JANUARY 25, 1991, AND THE EXISTING FLOODPLAIN ELEVATION WAS RECORDED IN LIBER 7934 PG. 890.
 4. PROPOSED CHURCH WILL BE ON PUBLIC WATER AND SEWER.

REVISIONS:

DATE: SEPT 2006
SCALE: 1"=30'
DRAWING NAME: 19D09-CP-RFV2
PROJECT: GRADING & UTILITY PLAN
PROJECT NUMBER: M.N.C.P.P.C. APPROVALS

PROJECT: BETH SHALOM AME ZION CHURCH
6TH ELECTION DISTRICT
PRINCE GEORGES'S COUNTY, MARYLAND

FILE NO. MDPG-19D09-01
SHEET 4 OF 8

WE Inc. Williams Enterprises Incorporated
18 Mosby Lane Stafford Virginia 22556
540-286-3710 and 540-286-0345 Fax
wehr@hughes.net

WARDER Your Church Builder
Phone: (301) 868-5900
Toll Free: (800) 732-7266
Fax: (301) 868-8740
www.wardergroup.com