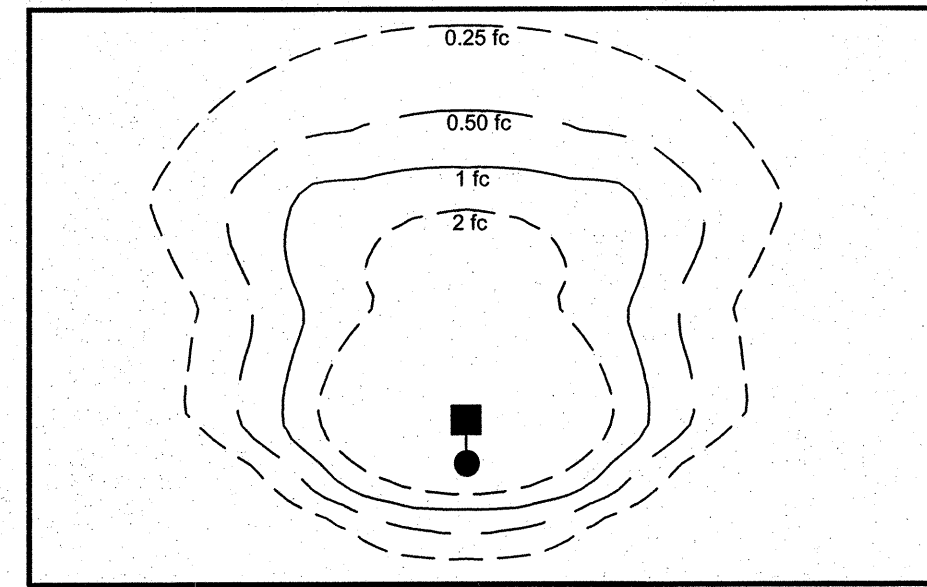
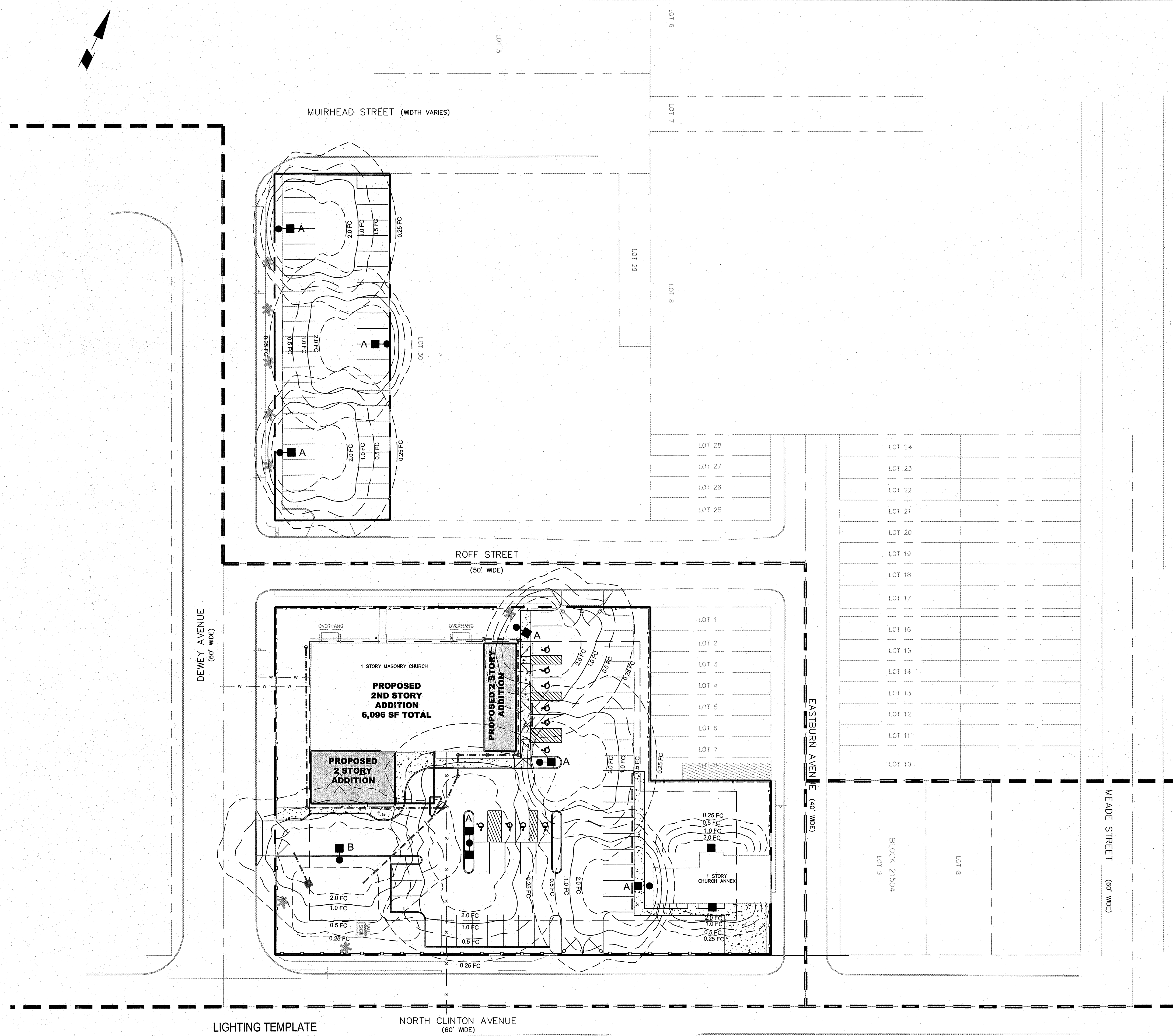


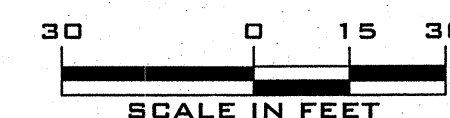
GENERAL LIGHTING NOTES:

1. SITE ELECTRICAL CONTRACTOR TO COORDINATE LOCATION OF EASEMENTS, UNDERGROUND UTILITIES AND DRAINAGE BEFORE DRILLING POLE BASES.
2. FOR CONDUIT TERMINATION LOCATIONS AT BUILDINGS, SEE ARCHITECTURAL PLANS.
3. LIGHTING SUBSTITUTIONS
 - A. ANY LIGHT FIXTURE SUBSTITUTIONS BY THE CONTRACTOR MUST BE APPROVED BY THE ENGINEER AND OWNER. CONTRACTOR MUST PROVIDE CATALOG CUTS, COLOR PHOTOGRAPH AND A POINT BY POINT LIGHTING PLAN ANALYSIS OF THE ENTIRE PARKING AREA
 - B. CATALOG CUTS MUST IDENTIFY THE OPTICS, LAMP TYPE, DISTRIBUTION TYPE, REFLECTOR, LENS, BALLASTS, WATTAGE, VOLTAGE, FINISH, HOUSING DESCRIPTION AND PRODUCT ID#.
 - C. COLOR PHOTOGRAPH MUST CLEARLY SHOW THE REPLACEMENT FIXTURE POLE MOUNTED. THE FIXTURE'S COLOR, FINISH AND PHYSICAL CHARACTERISTICS MUST BE EASILY IDENTIFIED.
 - D. ANY LIGHT SUBSTITUTION SUBMITTAL TO THE ENGINEER LACKING ANY OF THE STATED CRITERIA WILL NOT BE APPROVED.
4. ELECTRICAL WIRING DESIGN IS TO BE PROVIDED BY THE CONTRACTOR OR CONSULTANT.
5. ALL WIRING SHALL BE INSTALLED IN CONDUIT.
6. SITE LIGHTING SHALL BE INSTALLED IN ACCORDANCE WITH ALL APPLICABLE ANSI AND IES STANDARDS.
7. LIGHTING SHALL BE SHIELDED IN SUCH A MANNER AS NOT TO CREATE A HAZARD OR NUISANCE TO THE ADJOINING PROPERTIES OR THE TRAVELING PUBLIC.
8. ALL LIGHTS SHALL BE SHIELDED TO RESTRICT THE MAXIMUM APEX ANGLE OF THE CONE OF ILLUMINATION TO 150 DEGREES WHERE LIGHTS ALONG PROPERTY LINES WOULD BE VISIBLE TO ADJACENT RESIDENTS, THE LIGHTS SHALL BE APPROPRIATELY SHIELDED.



LUMINAIRE SCHEDULE

SYMBOL	QTY.	ARRANGEMENT	LUMENS	LLF	MOUNTING HEIGHT	DESCRIPTION
● ■ A	6	SINGLE	26000	0.80	20 FEET	PROPOSED 250 WATT HIGH PRESSURE SODIUM EMCO SINGLE PAES-FH-250HPS
■ ● ■ A	1	DOUBLE	26000	0.80	20 FEET	PROPOSED 250 WATT HIGH PRESSURE SODIUM EMCO DOUBLE PAES-FH-250HPS
● ■ B	1	SINGLE	26000	0.80	20 FEET	PROPOSED 250 WATT HIGH PRESSURE SODIUM EMCO DOUBLE PAES-FH-250HPS
■ C	2	WALL MOUNT	9000	0.67	10 FEET	PROPOSED 150 WATT HIGH PRESSURE SODIUM WALL PACK EMCO ECA14-2H-150 HPS



LIGHTING PLAN

NORTH CLINTON CHURCH OF CHRIST
 PLATE 215, BLOCK 21501, LOT 31 & BLOCK 21503, LOTS 9, 10 & 11
 SITUATE IN
 CITY OF TRENTON
 COUNTY OF MERCER, STATE OF NEW JERSEY

SITE CIVIL ENGINEERING
 213 CHERRY TREE COURT
 FRANKLINVILLE, NEW JERSEY 08322
 (856) 885 - 8679
 FAX (856) 513 - 6594

FILE NUMBER 2009-107	DATE
CHECKED BY: WG	WILLIAM P. GILMORE, P.E.
DRAWN BY: TL	NEW JERSEY PROFESSIONAL ENGINEER NO. 246EN4783100
REV.	DATE
DESCRIPTION	BY
SCALE: 1"=30'	PROJECT NO. 2009 - 107
DATE: OCTOBER 19, 2009	SHEET NO. 8 of 13