

PREDEVELOPMENT STORM GENERATION

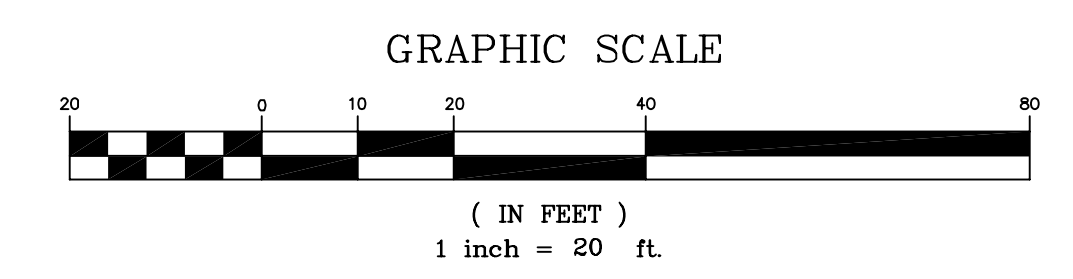
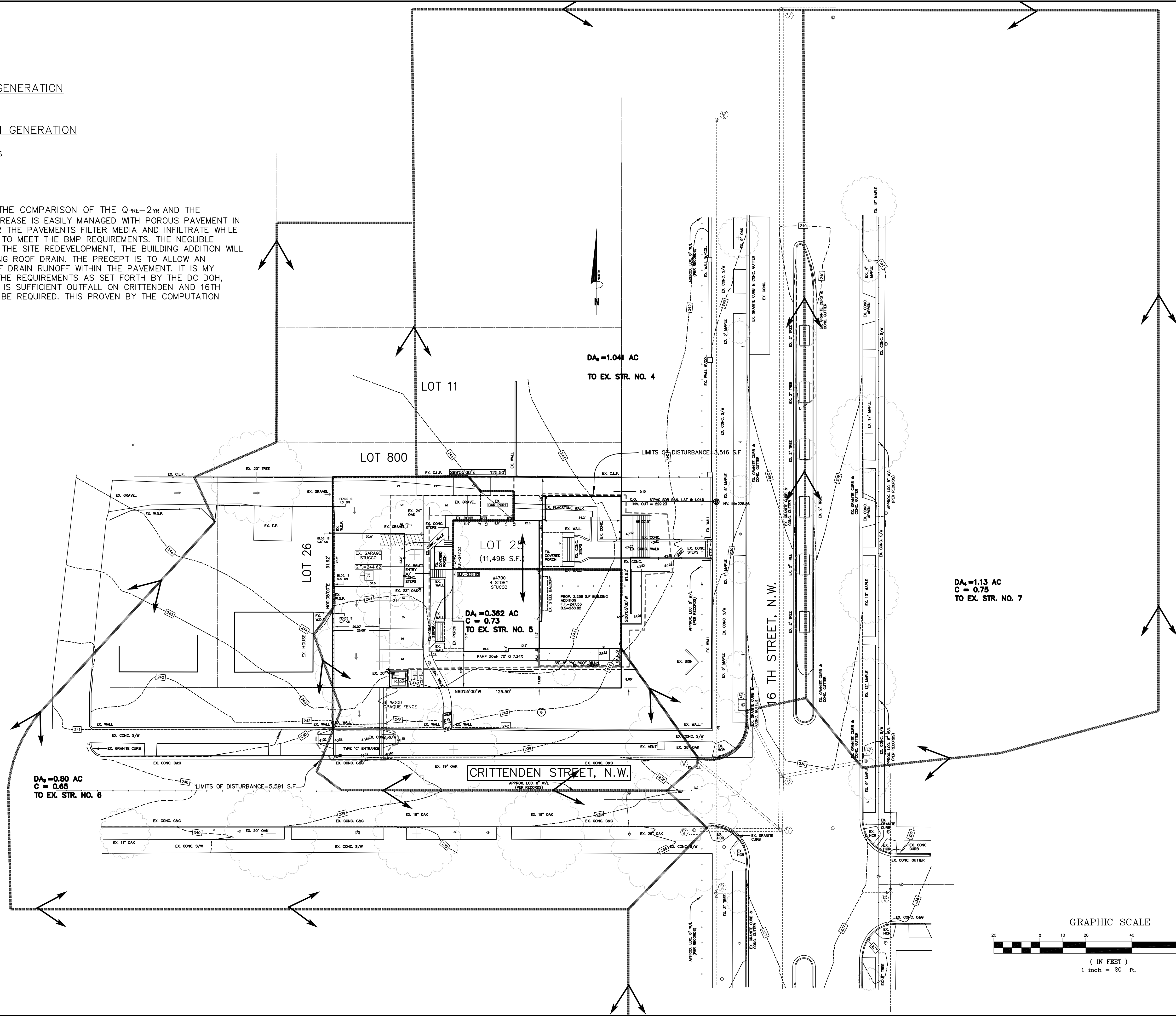
Q_pPRE = CIA = .45*5.28*0.26 = 0.62 CFS
 Q_wPRE = CIA = .45*7.68*0.26 = 0.85 CFS

POST DEVELOPMENT STORM GENERATION

Q_pPOST = CIA = .81*5.28*0.26 = 1.11 CFS
 Q_wPOST = CIA = .81*7.68*0.26 = 1.62 CFS

STORMWATER MANAGEMENT NARRATIVE

THE SITE EXHIBITS AN INCREASE FROM THE COMPARISON OF THE Q_{PRE}-2YR AND THE Q_{POST}-15YR (1.62 CFS) OF 1.0 CFS. THIS INCREASE IS EASILY MANAGED WITH POROUS PAVEMENT IN WHICH THE VOIDS ALLOW RUNOFF TO ENTER THE PAVEMENTS FILTER MEDIA AND INFILTRATE WHILE ALSO PROVIDING THE REQUIRED FILTRATION TO MEET THE BMP REQUIREMENTS. THE NEGLIBLE AMOUNT OF INCREASE IS CONSISTENT WITH THE SITE REDEVELOPMENT, THE BUILDING ADDITION WILL HAVE IT'S ROOF DRAIN TIED TO THE EXISTING ROOF DRAIN. THE PRECEPT IS TO ALLOW AN INFILTRATION PIPE TO PERCOLATE THE ROOF DRAIN RUNOFF WITHIN THE PAVEMENT. IT IS MY OPINION THAT THE CURRENT PLAN MEETS THE REQUIREMENTS AS SET FORTH BY THE DC DOH, WATERSHED MANAGEMENT DIVISION. THERE IS SUFFICIENT OUTFALL ON CRITTENDEN AND 16TH STREETS SHOULD A PHYSICAL CONNECTION BE REQUIRED. THIS PROVEN BY THE COMPUTATION LOCATED ON THIS PLAN SHEET.



PA PHELPS CONSULTING

PA PHELPS CONSULTING LLC.
 38 Poplar View Drive
 Stafford, Virginia 22554
 Phone: (540) 720-5988
 Fax: (540) 720-4173
 e-mail: pap@paphelpsconsulting.com
 pap@paphelpsconsulting.com
 © P.A. Phelps Consulting LLC.

STORMWATER MANAGEMENT PLAN

WASHINGTON SEVENTH DAY BAPTIST CHURCH

DISTRICT OF COLUMBIA

PLAN STATUS	
7/15/08	REV. PER DOT
COMMENTS	
DATE	DESCRIPTION
PAP DESIGN	PAP DRAWN
SCALE	ACM CHKD
	H: 1"=20'
	V: 1"=2'
JOB No. PAP-700125	
DATE : AUGUST, 2007	
FILE No. 2007-02-WBC-DC	
SHEET C-6.00	

C:\land projects\2008\Washington Seventh Day Baptist Church\Conceptual\CDP-500.dwg