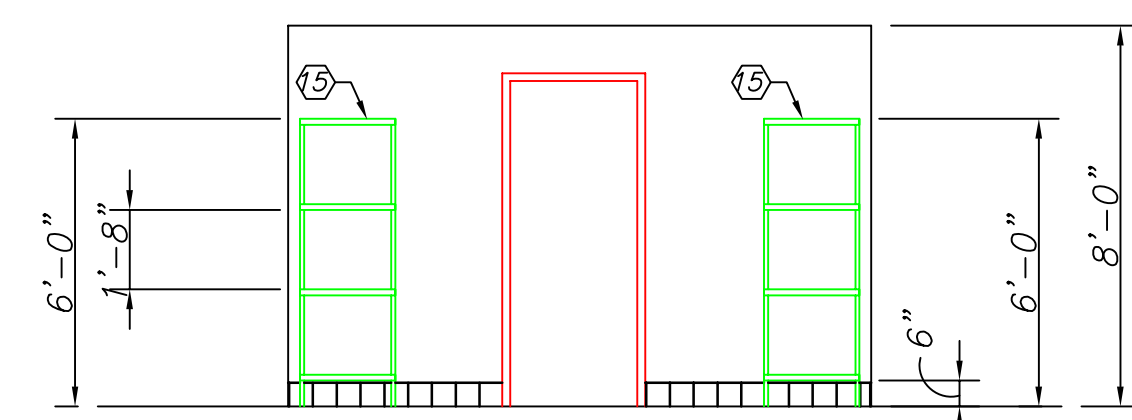
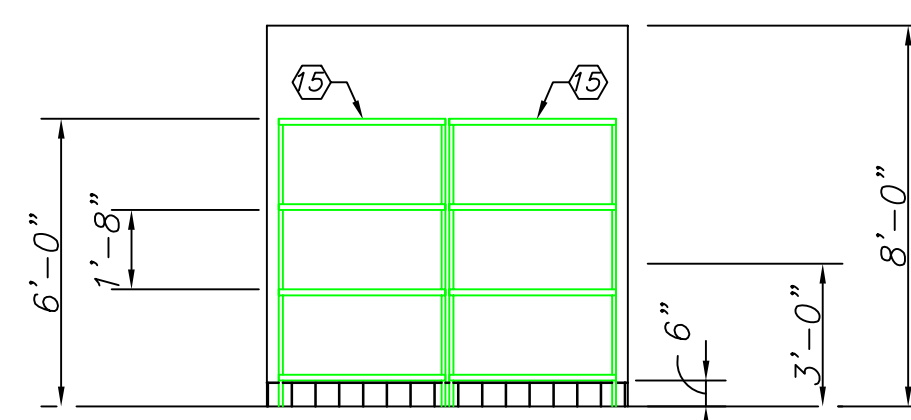


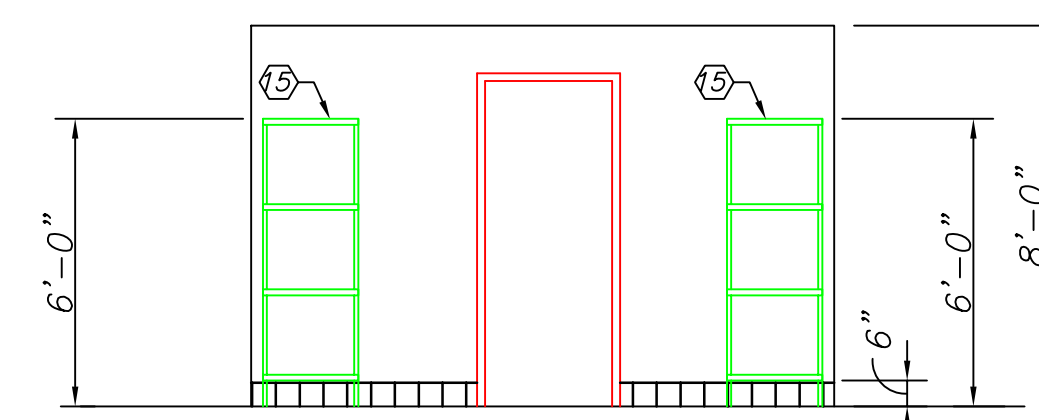
ELEVATION 9
SCALE: 1/4"=1'-0"



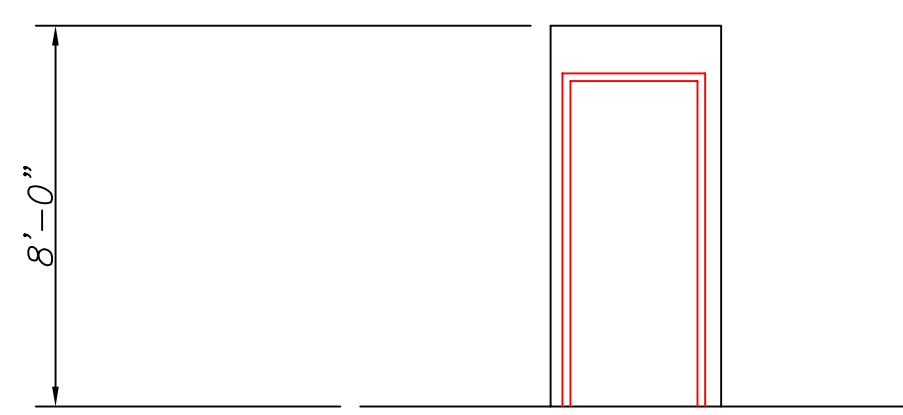
ELEVATION 10
SCALE: 1/4"=1'-0"



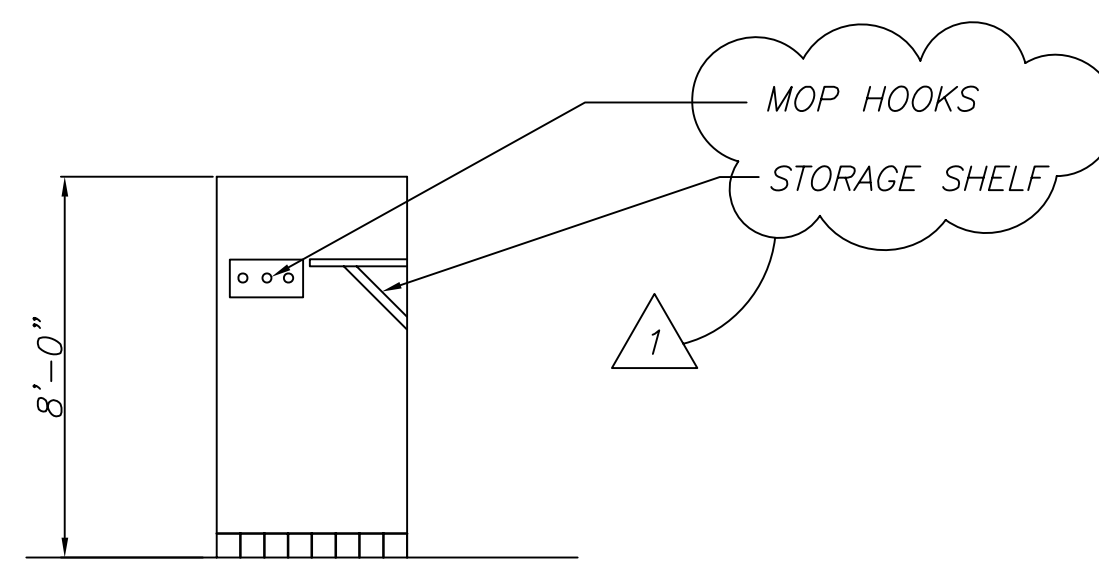
ELEVATION 11
SCALE: 1/4"=1'-0"



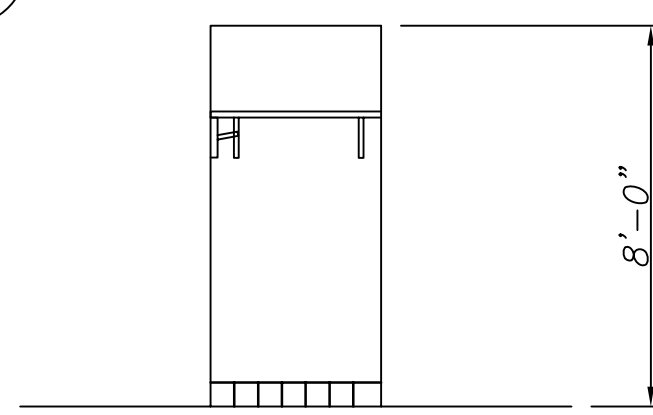
ELEVATION 12
SCALE: 1/4"=1'-0"



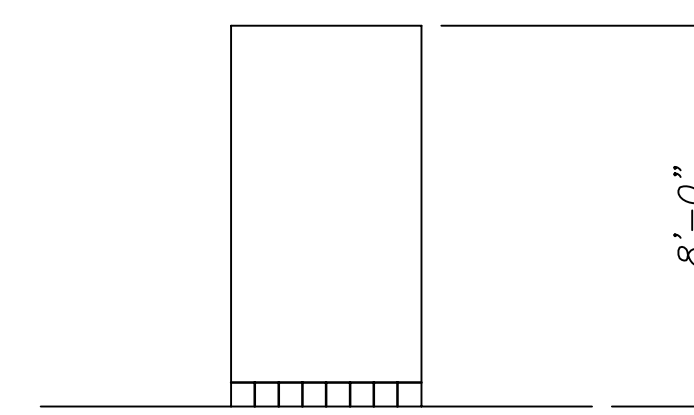
ELEVATION 5
SCALE: 1/4"=1'-0"



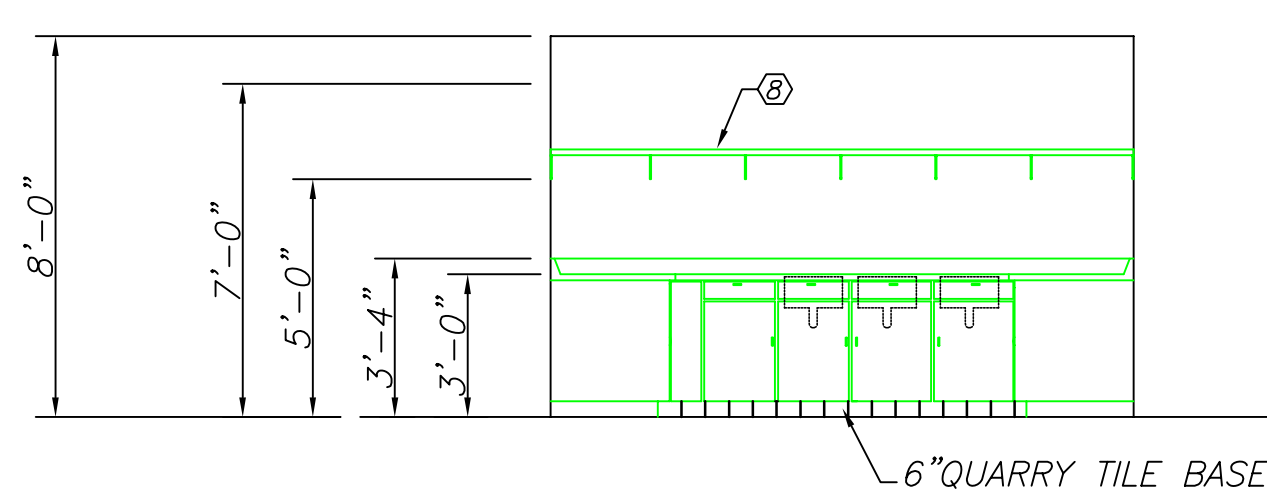
ELEVATION 6
SCALE: 1/4"=1'-0"



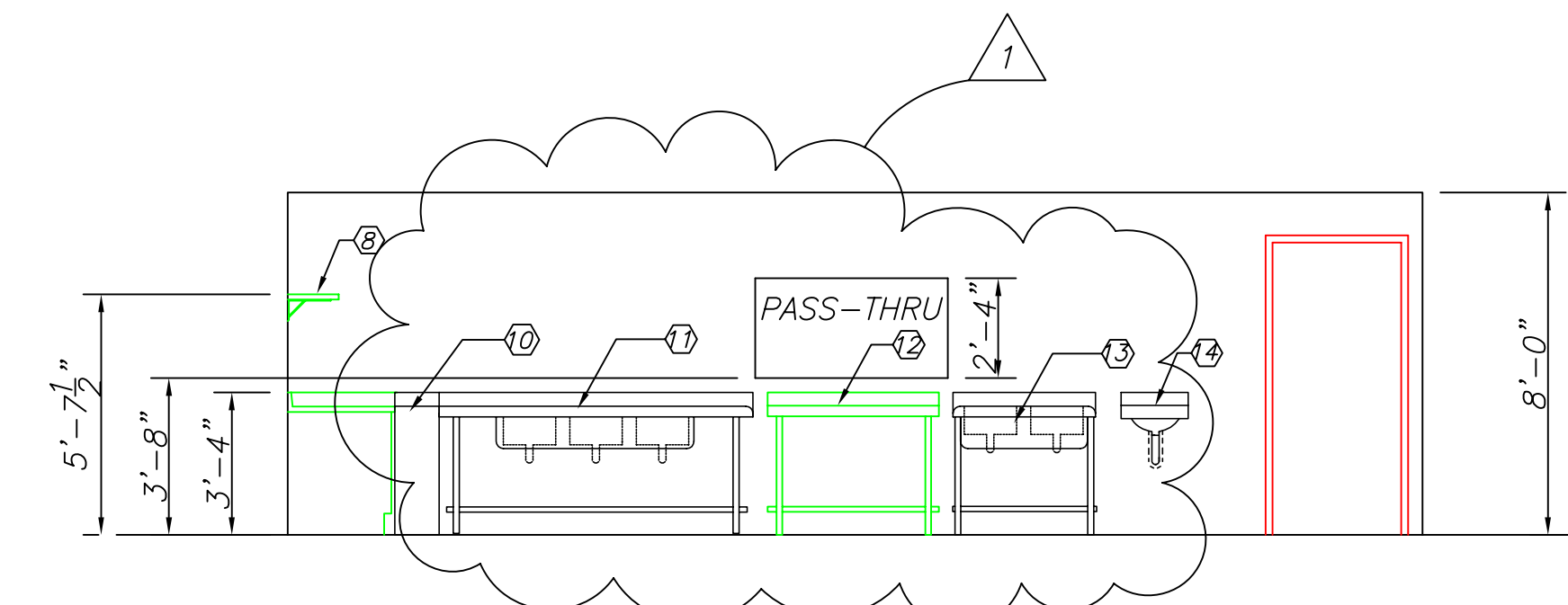
ELEVATION 7
SCALE: 1/4"=1'-0"



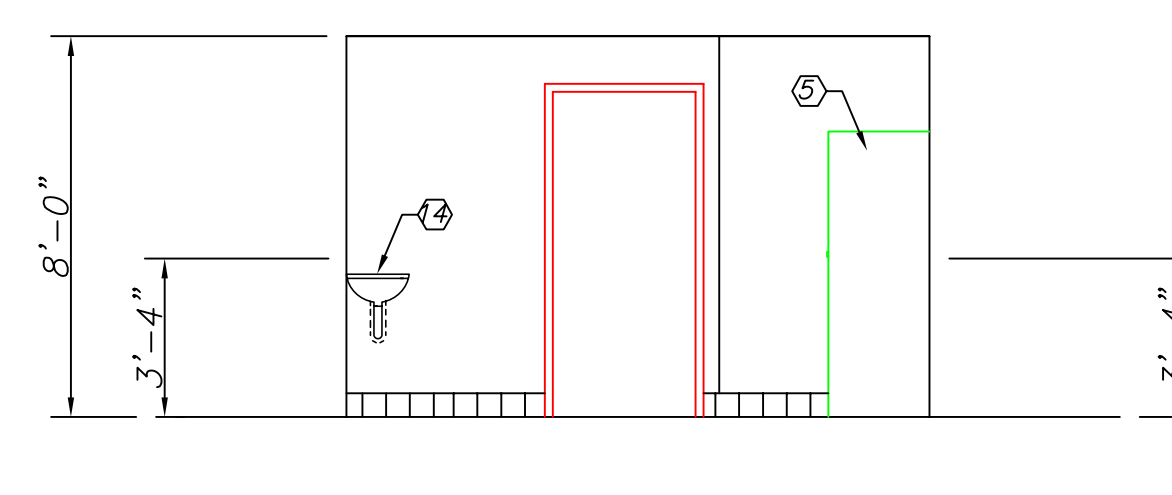
ELEVATION 8
SCALE: 1/4"=1'-0"



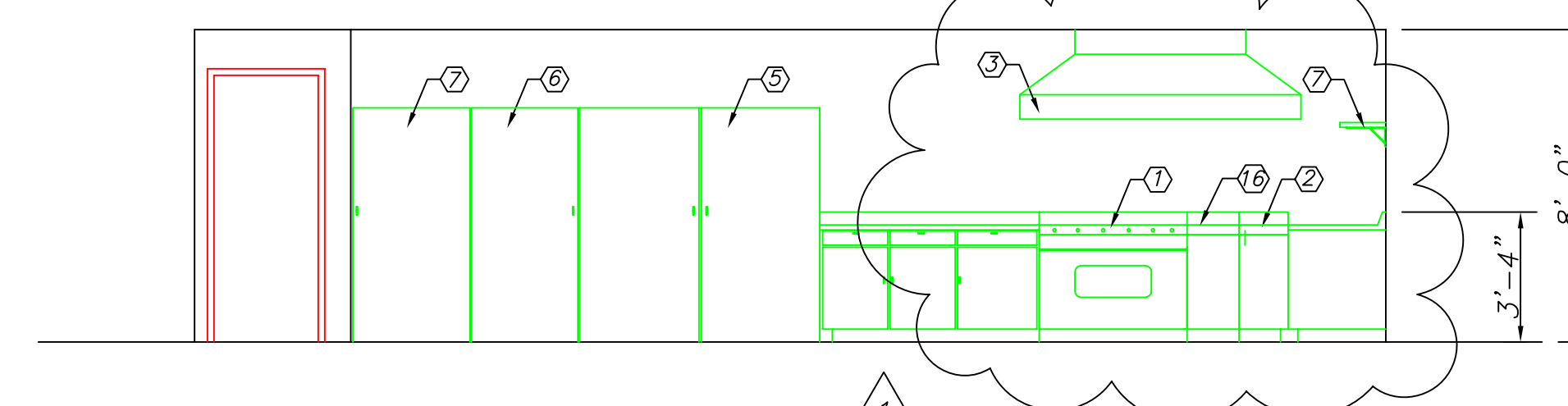
ELEVATION 1
SCALE: 1/4"=1'-0"



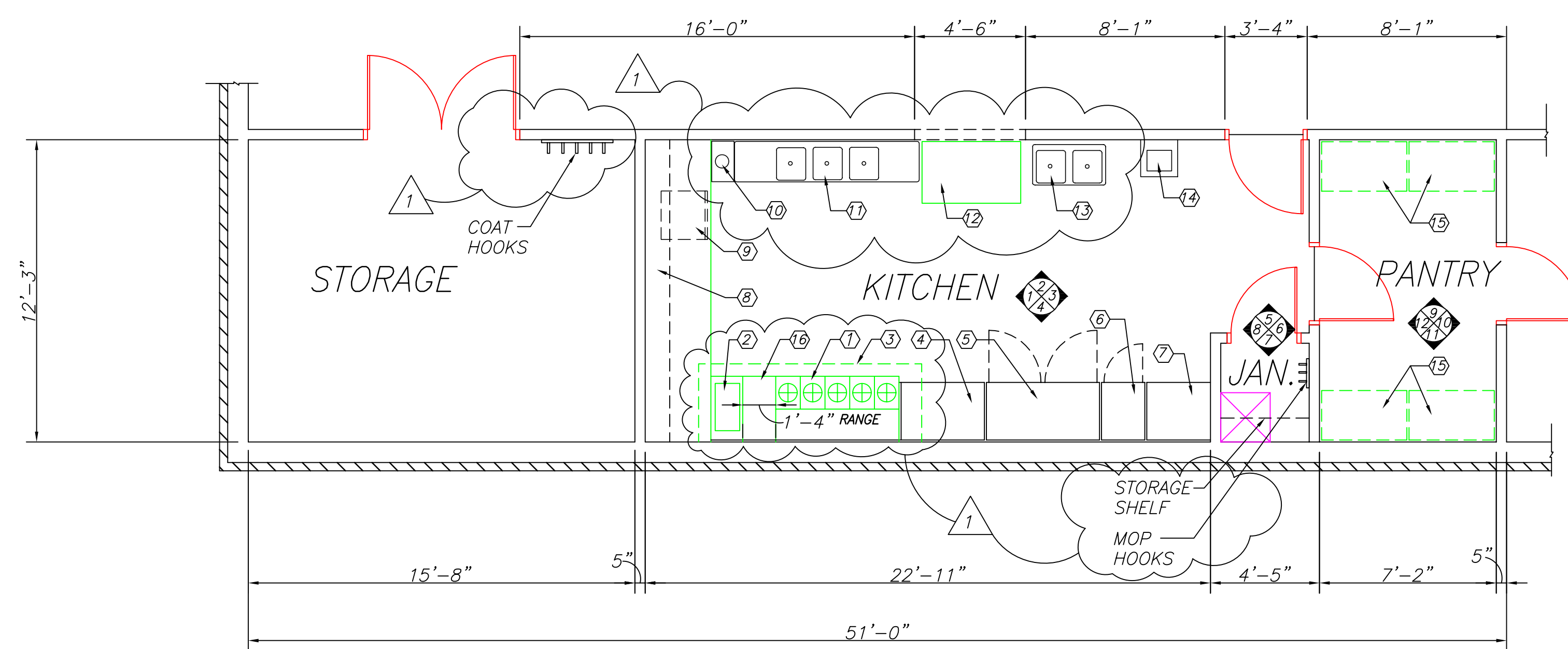
ELEVATION 2
SCALE: 1/4"=1'-0"



ELEVATION 3
SCALE: 1/4"=1'-0"



ELEVATION 4
SCALE: 1/4"=1'-0"



KITCHEN FLOOR PLAN
SCALE: 1/4"=1'-0"

GENERAL HEALTH DEPARTMENT NOTATIONS

- All piping, conduit, bx cable and similar construction will be either located inside a wall or installed with a minimum 3/4-inch space from the wall or sealed to the wall.
- All doors to outside will be self-closing and rodent-proof. Mall doors must be a solid construction design with no gaps greater than 1/4 inch.
- A minimum of 20 footcandles of shielded light will be provided at all work surfaces in storage areas, food preparation areas, utensil-washing areas, toilet rooms, locker rooms, and in garbage and rubbish areas.
- All restroom doors will be self-closing.
- All restrooms will be equipped with mechanical exhaust ventilation sized at a minimum rate of 2 cubic feet per minute per square foot of floor area and exhausting directly to the outside.
- All floor-mounted equipment will be placed on NSF international (NSF) approved 6-inch legs, or the equivalent, and properly spaced from adjacent equipment or walls; or placed on NSF approved casters, or the equivalent; or properly sealed to all adjacent surfaces.
- All counter-mounted food service equipment weighing in excess of 80 pounds will be mounted on NSF approved 4-inch legs.
- All exposed raw wood will be sealed and painted.
- All annular openings in construction will be sealed/caulked to 1/32 of an inch.
- All exhaust hoods over cooking equipment will be capable of capturing and exhausting smoke generated from a 60-second smoke bomb.
- The outside storage of refuse and grease will be in rodent-proof containers located on a paved surface.
- All sink installations will be equipped with hot and cold running water through a mixing valve or combination faucet.
- All painting will be with lead-free, non-metallic, easily cleanable paint or a high quality varnish.
- Wastewater from all applicable food service equipment will be individually plumbed to an open site drain with a minimum 1-inch air gap.
- All overhead plumbing in food service facilities must comply with COMAR 10.15.03 section .07 C. (2) (e).

EXHIBIT F (SEALANTS)

- All sealants must be listed as approved by NSF international (NSF) under standard 51.
 - Sealants shall be used only in structurally sound joints and seams.
 - Sealants may be used to fill spaces and openings such as, but not limited to, blind rivet heads and slot and phillips head screws.
 - Openings around service and utility lines should be closed insofar as practical by:
 - Collars or grammets
 - Flexible form gaskets
- Sealants may be used to seal service and utility lines to wall or adjacent pieces of equipment where the spacing is closed to less than 1/8 inch.
- Sealants may not be utilized in food and splash contact surfaces to fill open spaces or voids, which results due to improper design or fabrication. Any opening in excess of 1/8 inch shall be considered excessive and must be closed using proper field joints.

KITCHEN EQUIPMENT	
①	RANGE OVEN- VULCAN 60L SERIES
②	DEEP FRYER- VULCAN GR35 SERIES
③	HOOD ABOVE
④	WORK TABLE-EAGLE FOODSERVICE EQUIPMENT 16/304
⑤	REFRIGERATOR -TRUE SERIES T-49 (54"Lx29 1/2"Dx78 1/4"H)
⑥	FREEZER- TRUE SERIES T-19 (27"Lx24 1/2"Dx78"H)
⑦	ICE MAKER-HOSHIZAKI KML-400 SERIES
⑧	EAGLE FOODSERVICE EQUIPMENT WS1260TL
⑨	DISH WASHER - UNDERCOUNTER TYPE BY "CHAMPION MODEL UL-100"
⑩	GARBAGE DISPOSAL - "HAMMER MODEL HI-150" COMPLY WITH ASSE 1009
⑪	3-COMPARTMENT SINK-19"x16" BOWLS-TWP 18" DBS "ADAMS-BURCH 414-16-3-18"
⑫	WORK TABLE- 30"x48" 430 GAUGE W/4" BACKSPLASH "ADAMS-BURCH T3048BS"
⑬	2-COMPARTMENT SINK-19"x16" BOWLS-NO BDS "ADAMS-BURCH 414-16-2"
⑭	HAND SINK
⑮	WIRE SHHELVING-INTER METRO INDUSTRIES CORPORATION
⑯	16" WIDE STAINLESS STEEL SPLASH PANEL

Date: 1-14-08

Revisions:	COUNTY REVIEW COMMENTS

Consultants:
WARDER & ASSOCIATES INC.
CHURCH EXPANSION SPECIALISTS
8016 OLD ALEXANDRIA FERRY ROAD
CLINTON MARYLAND 20735
PHONE: 301-868-5900

Certification:

Project Title:
BETH SHALOM A.M.E. ZION CHURCH
2501 RITCHIE ROAD
DISTRICT HEIGHT, MARYLAND 20735
KITCHEN PLAN AND ELEVATIONS

Philip Aaron Lacy, Architects
6188 Oxon Hill Road, Suite 303
Oxon Hill, Maryland 20745
Phone: 301-567-8223

Date: DEC. 1, 2005
Scale: 1/4"=1'-0"
Drawn: FCB
Checked: PAL
File No. BETH_A13

Drawing No.
A-13
of