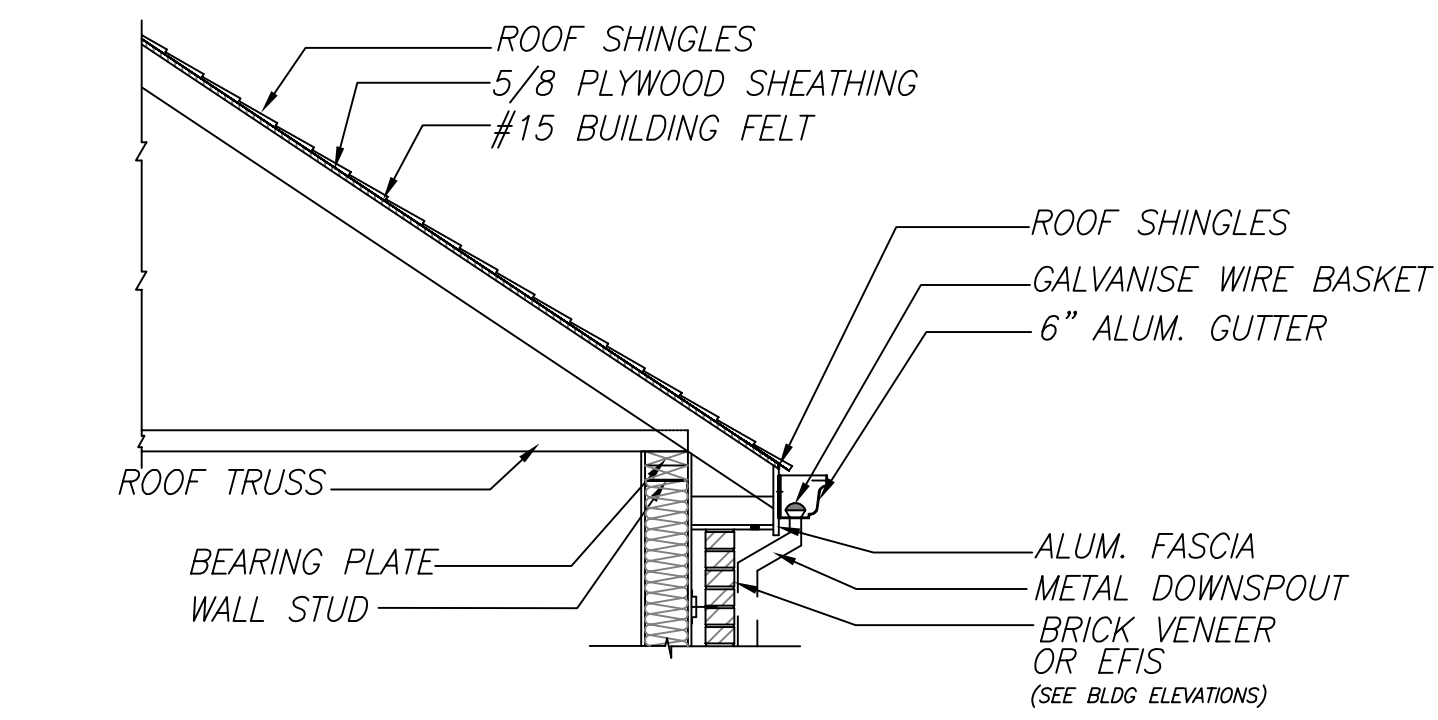
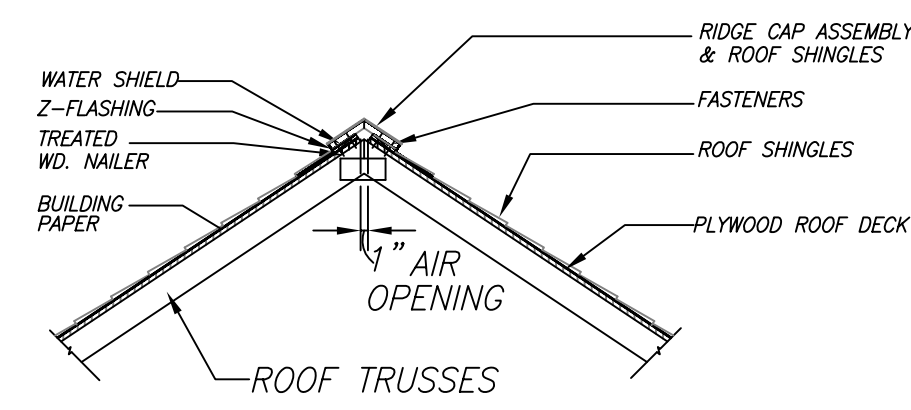


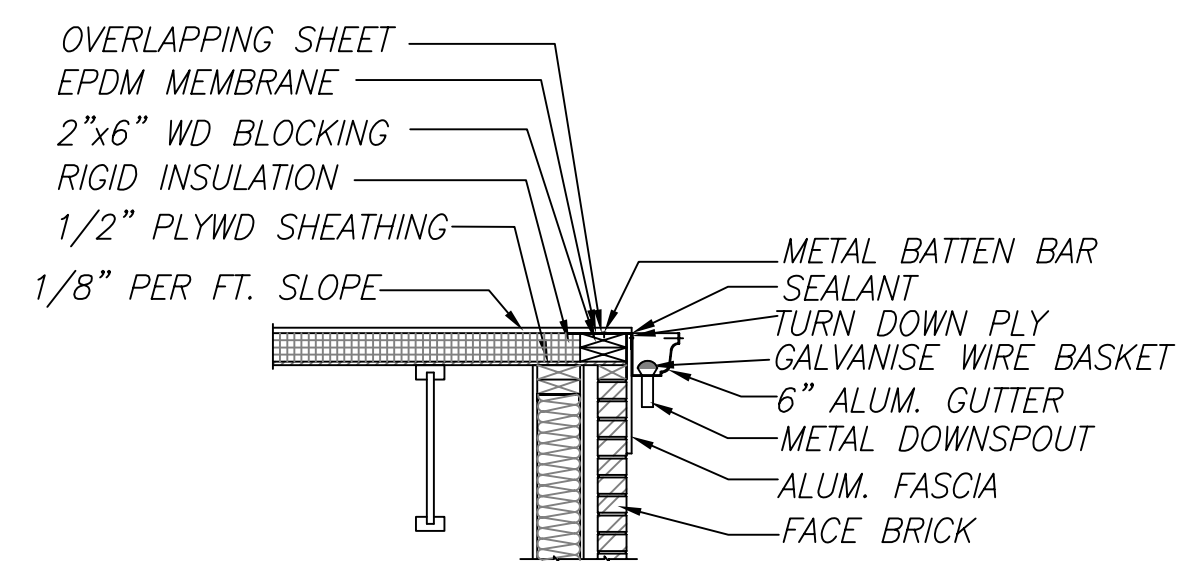
**ROOF DETAILS**  
SCALE: 1 1/2"=1'-0"



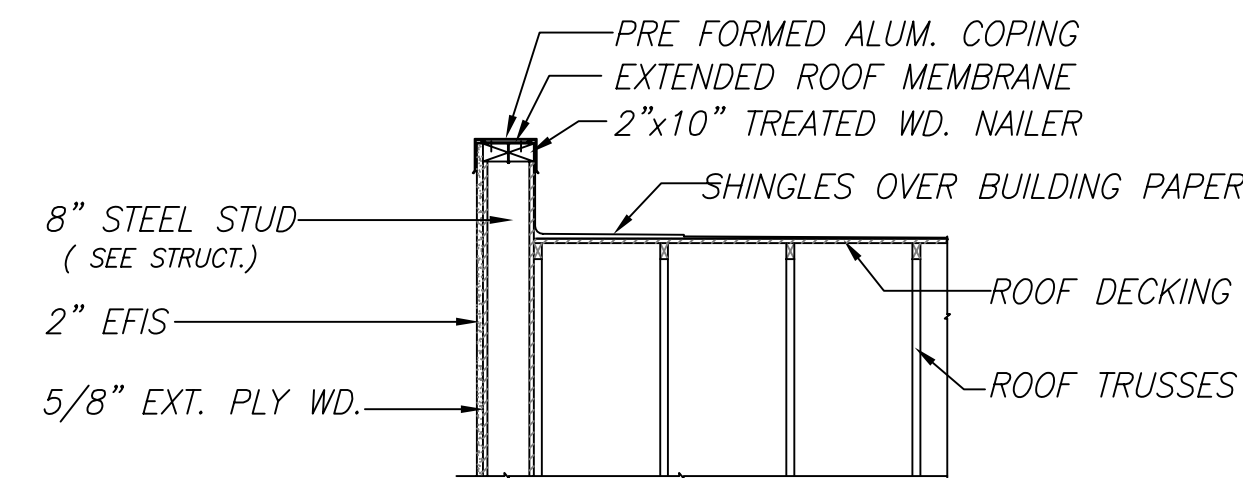
ROOF DETAIL 1  
SCALE: 1 1/2"=1'-0" A-11



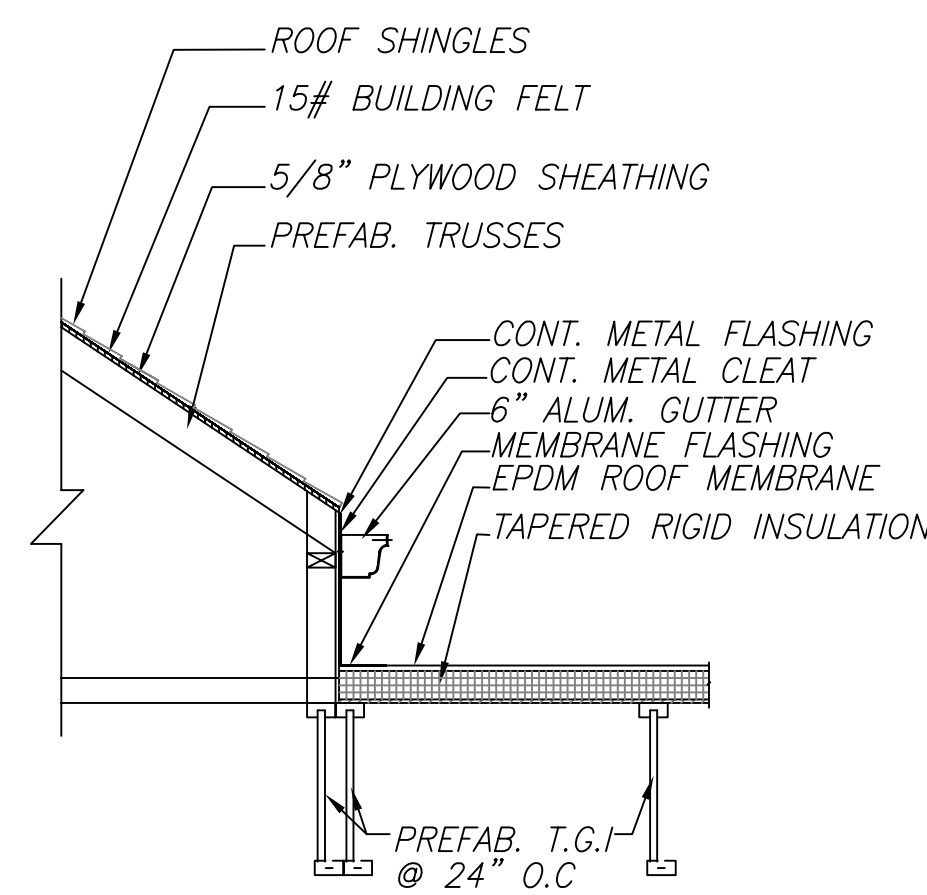
ROOF DETAIL 4  
SCALE: 1 1/2"=1'-0" A-3



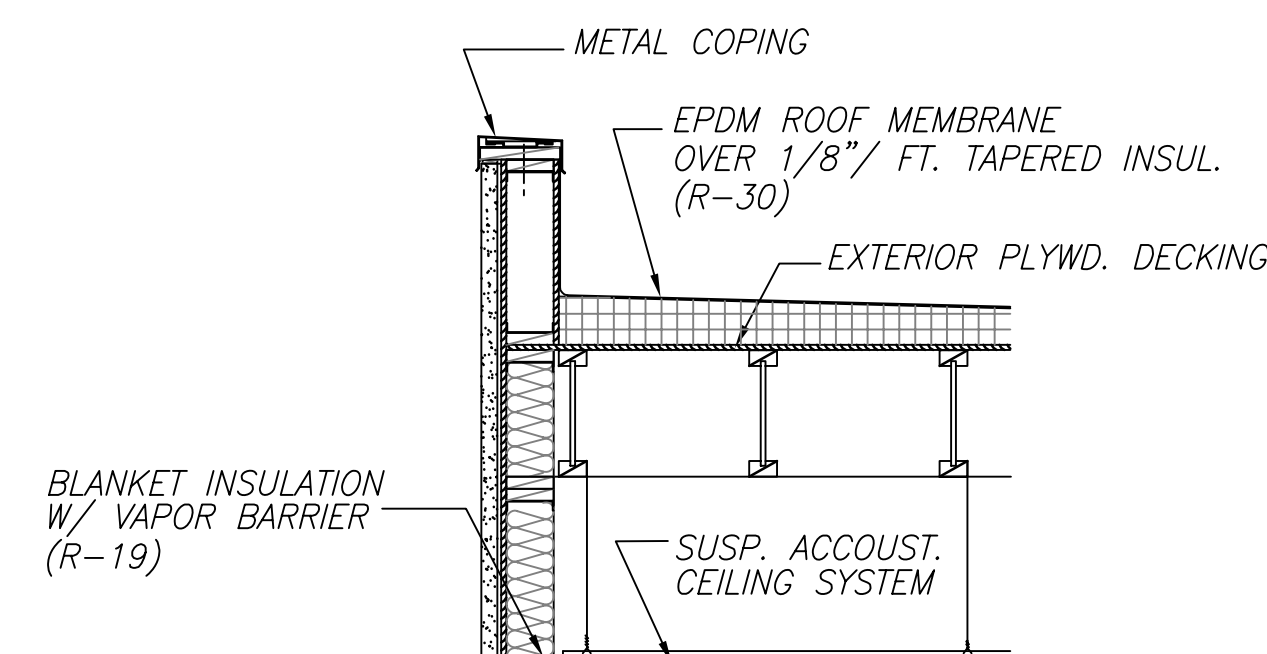
ROOF DETAIL 2  
SCALE: 1 1/2"=1'-0" A-3



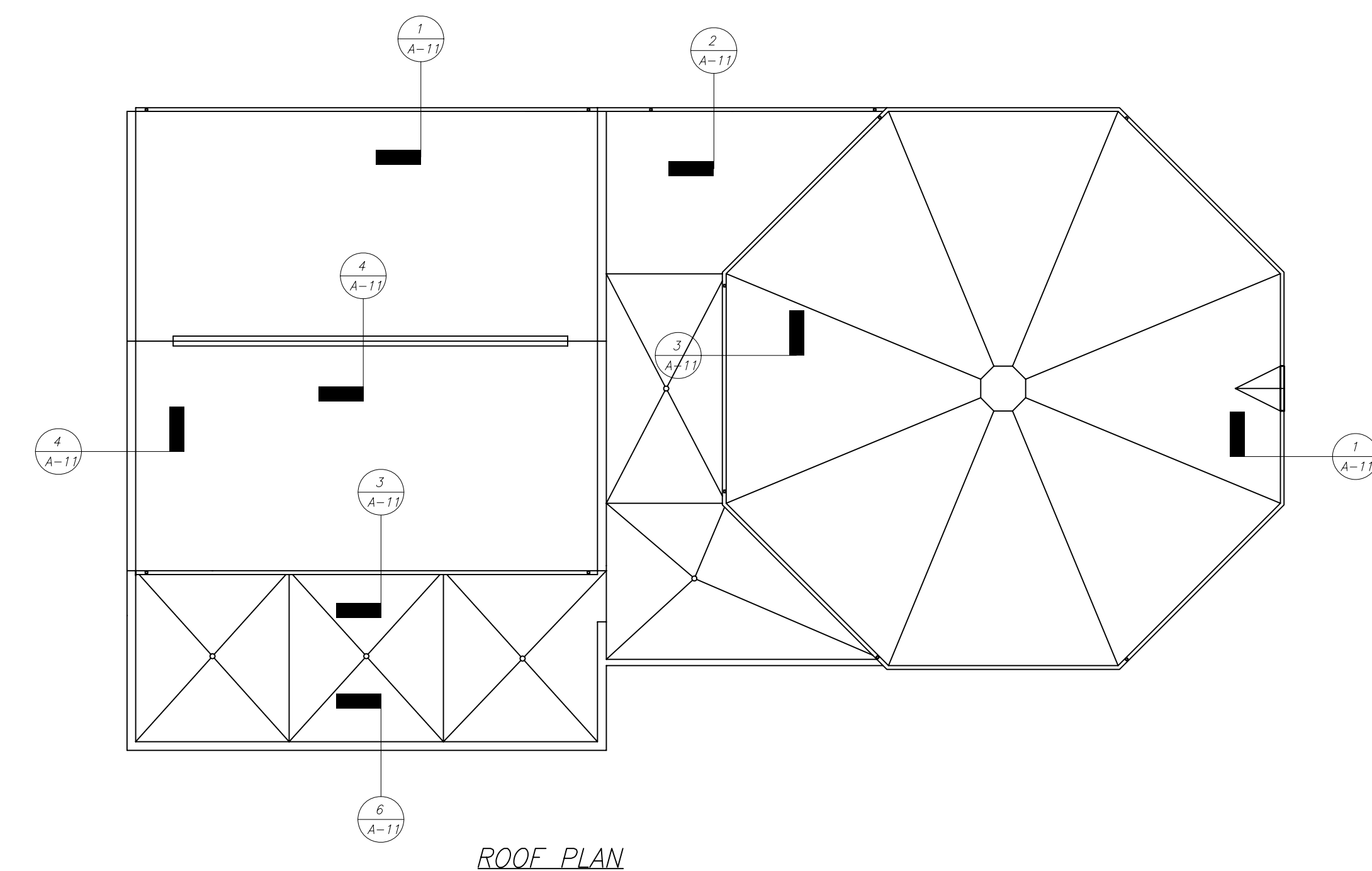
COPING DETAIL 5  
SCALE: 1 1/2"=1'-0" A-3



ROOF DETAIL 3  
SCALE: 1 1/2"=1'-0" A-3

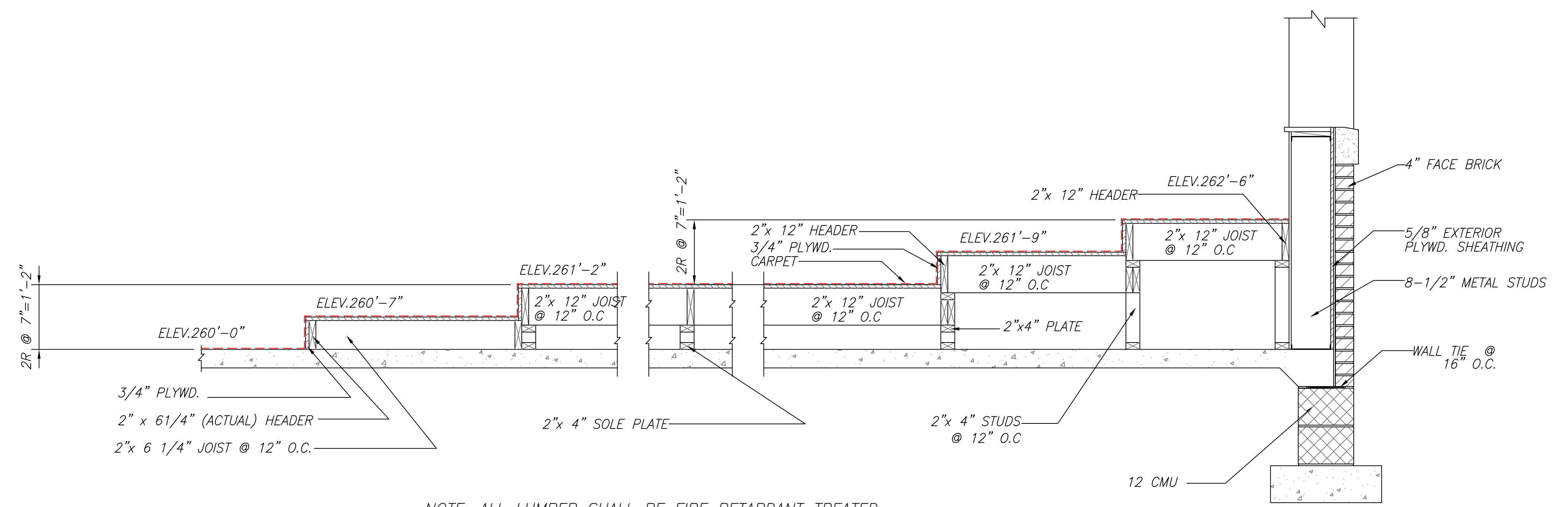


ROOF DETAIL 6  
SCALE: 1 1/2"=1'-0" A-3



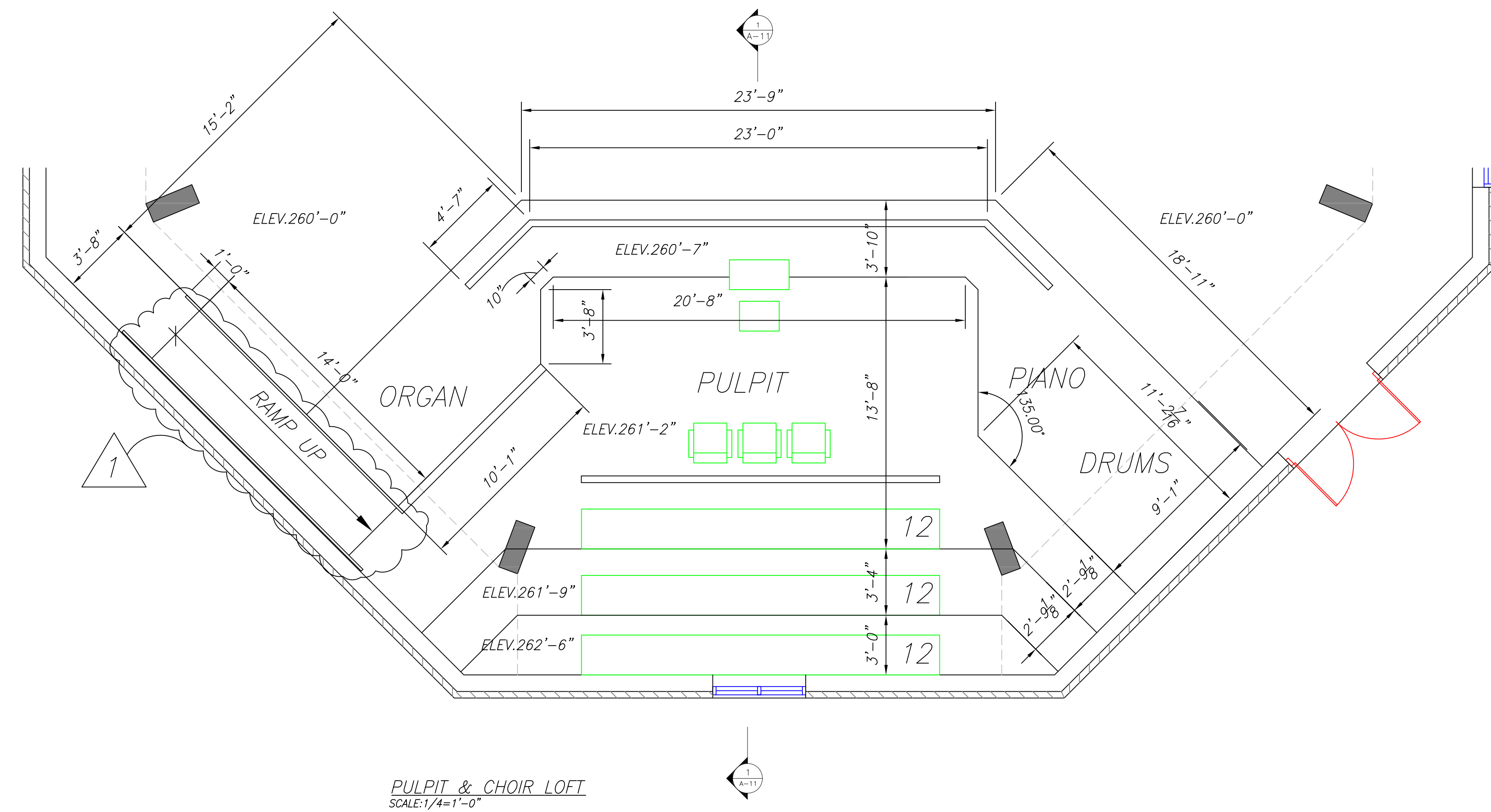
ROOF PLAN

**PULPIT DETAILS**  
SCALE: 1 1/2"=1'-0"



NOTE: ALL LUMBER SHALL BE FIRE RETARDANT TREATED

SECTION 1  
SCALE: 3/4"=1'-0" A-11



PULPIT & CHOIR LOFT  
SCALE: 1/4"=1'-0"

Date:	01-14-08
Revisions:	COUNTY REVIEW COMMENTS

Consultants:  
**WARDER & ASSOCIATES INC.**  
CHURCH EXPANSION SPECIALIST  
8016 OLD ALEXANDRIA FERRY ROAD  
CLINTON, MARYLAND 20735  
PHONE: 301-666-8900

Certification:

Project Title:  
**BETH SHALOM A.M.E. ZION CHURCH**  
2501 RICHIE ROAD  
DISTRICT HEIGHTS, MARYLAND 20735

Philip Aaron Lacy, Architect  
6188 Oxon Hill Road, Suite 303  
Oxon Hill, Maryland 20745  
Phone: 301-567-8223

Date: DEC. 1, 2005  
Scale: 1/4"=1'-0"  
Drawn: FCB  
Checked: PAL  
File No. BETH\_A11

Drawing No.  
**A-11**  
of