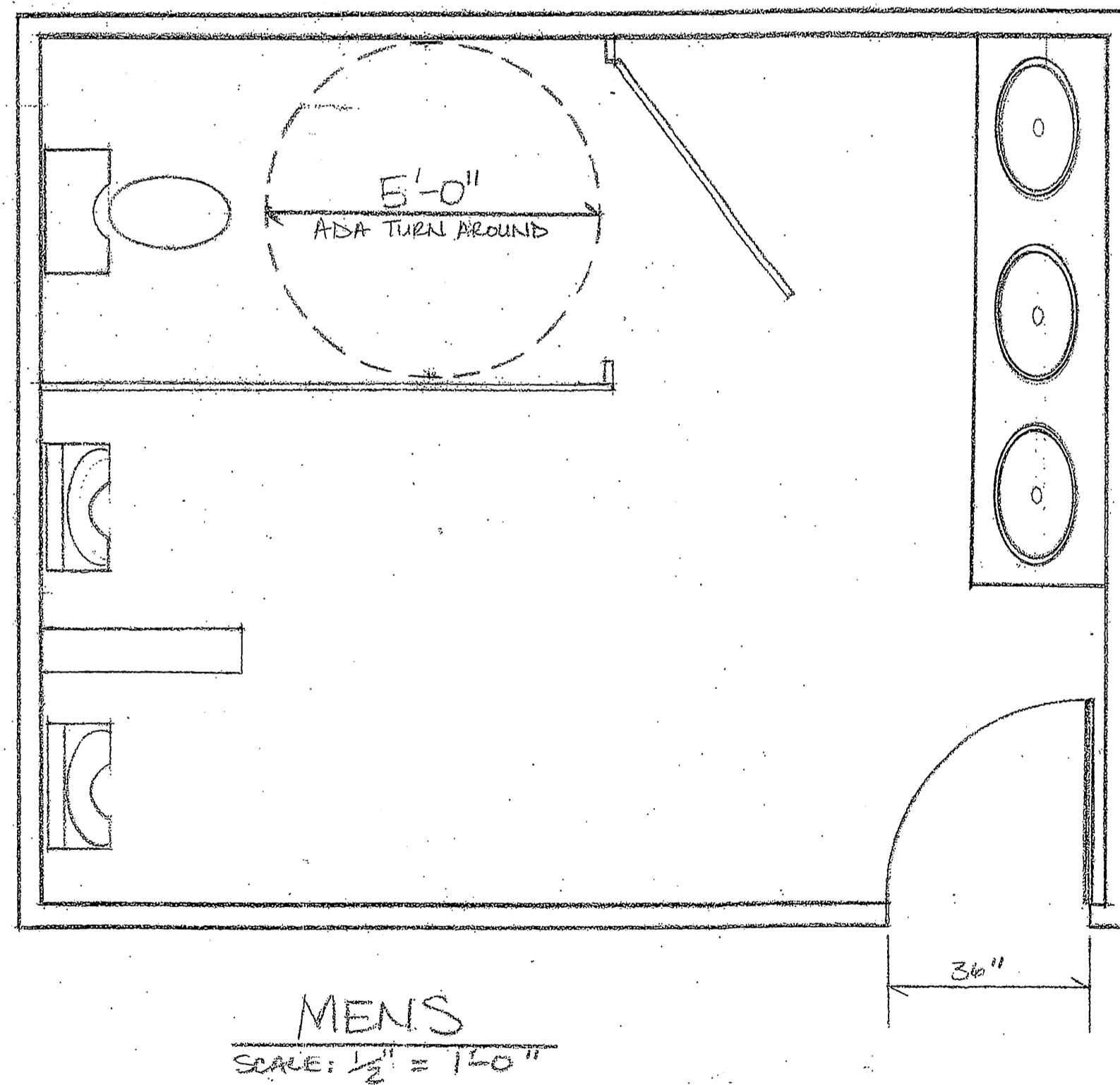
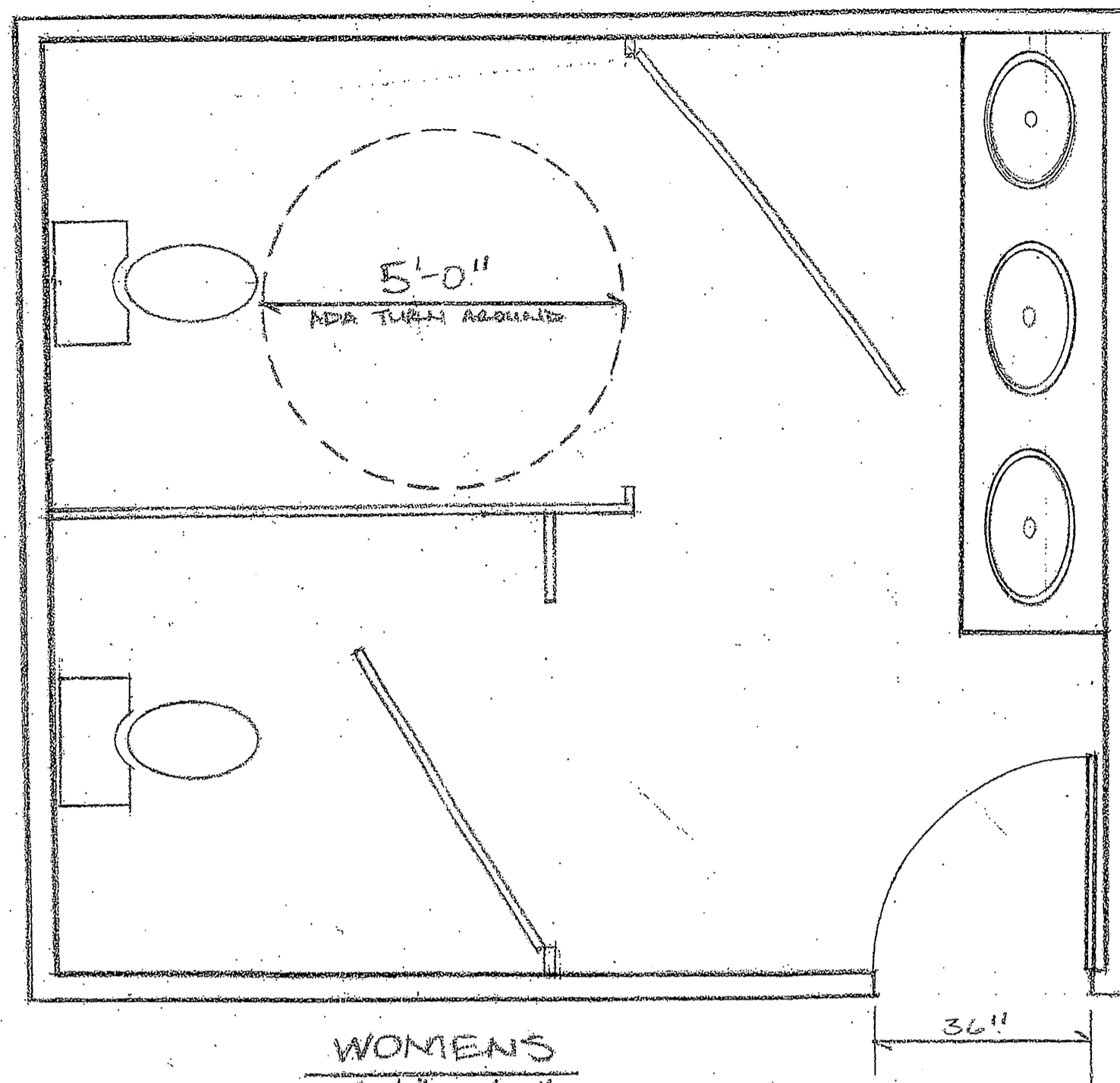


ENLARGED RESTROOM PLAN

SCALE: 1/2" = 1'-0"



RESTROOM GENERAL NOTES

- 2) WATER CLOSET SHALL HAVE A MIN SIDE CLEARANCE OF 32" FROM A WALL ON ONE SIDE AT ACCESSIBLE FIXTURE.
- 4) ACCESSIBLE LAVATORIES SHALL HAVE A MIN 18" TO THE CENTER OF FIXTURE FROM ADJACENT FIXTURE.
- 5) THE COUNTER TOP IS A 34" MAX HEIGHT AND 29" MIN, CLEAR BELOW.
- 6) THE COUNTER IS 9" MIN HIGH AND 30" WIDE AND 17" DEEP AT THE BOTTOM FOR ACCESSIBLE COMPLIANCE
- 7) HOT WATER PIPES AND DRAIN LINES ARE INSULATED
- 8) GRAB BARS SHALL BE LOCATED 15" TO 16" FOR THE CENTERLINE OF THE WATER CLOSET STOOL
- 9) SIDE GRAB BARS SHALL BE > OR = 42" LONG WITH THE FRONT END POSITIONED 24" IN FRONT OF THE STOOL AT 3' 3" A.F.F.
- 10) TOTAL LENGTH OF BARS AT THE BACK SHALL BE > OR = 36" AT 3' 3" A.F.F.
- 11) THE DIAMETER OF THE GRAB BAR IS 1.25" TO 1.5"
- 12) THE SPACE BETWEEN THE GRAB BAR AND SHALL BE 1.5" AND SUPPORT 250# PROVIDE WALL BACKING PLATE.
- 13) ALL RESTROOM FACILITIES SHALL MEET ALL LOCAL ACCESSIBILITY CODE
- 14) ALL FLOOR TILE TO BE MATTE FINISH

RESTROOM NOTES

- 1) PROVIDE A CLEAR SPACE OF 60" DIAMETER WITHIN ROOM
- 2) PROVIDE 60" CLEAR SPACE TO 27" HEIGHT
- 3) PROVIDE 48" MIN CLEAR SPACE IN FRONT OF WATER CLOSET
- 4) PROVIDE 28" MIN CLEAR SPACE FROM THE WATER CLOSET TO ANY FIXTURE
OR TOILET PARTITION
- 5) PROVIDE A 5lb MAX FORCE FLUSH VALVE
- 6) PROVIDE WATERPROOF CERAMIC TILE TO 4'-6" A.F.F.
- 7) PROVIDE TOILET DISPENSER WITHIN 12" OF THE FRONT EDGE OF TOILET SEAT
AT ACCESSIBLE STALL.
- 8) MOUNT GRAB BARS AT 33" TO CENTER AND PARALLEL TO FLOOR AT ACCESSIBLE AND AMBULATORY STALL.

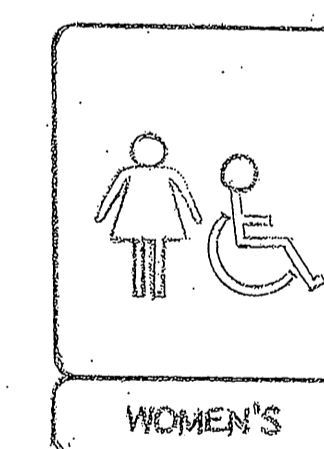
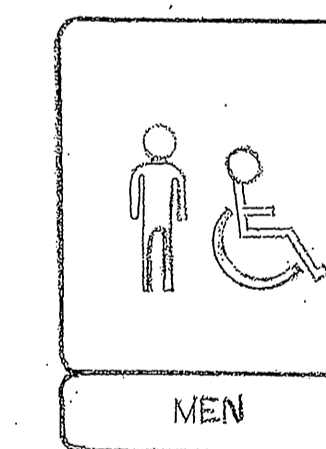
PROVIDE AN AUTOMATIC CLOSING DEVICE AT HANDICAPPED COMPARTMENT DOOR (3 SECOND MINIMUM SWEEP TIME FROM OPEN POSITION OF 70 DEGREES TO A POINT 3" FROM LATCH

PROVIDE A U-SHAPED HANDLE AT INSIDE AND OUTSIDE OF DOOR NOT REQUIRING TIGHT GRASPING OR TWISTING THIS SHOULD BE LOCATED AT 30" TO 44" ABOVE FLOOR

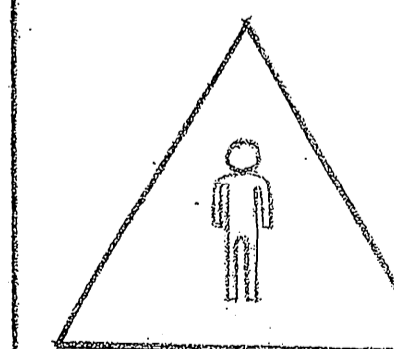
RESTROOM PLUMBING FIXTURES

OCCUPANCY = 326	WOMEN		MEN	
	REQUIRED	PROVIDED	REQUIRED	PROVIDED
WATER CLOSET @ 1/75	5	7	3	3
LAVATORY @ 1/200	2	5	2	5
URINAL				5

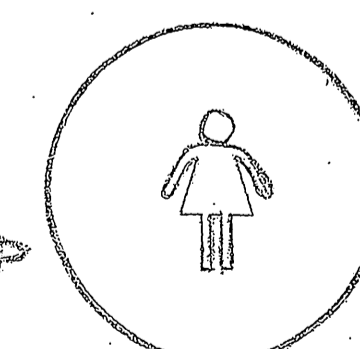
ACCESSIBILITY SYMBOLS



SIGN ADJACENT TO DOOR WITH BRAILLE



12" RD CIRCLE'S TYP



MEN'S
AT DOOR

WOMEN'S
AT DOOR

MOUNT ON DOORS AT +60" TO CENTER OF CIRCLE WHEN NO DOOR, MOUNT ON ADJACENT WALL.

INTERNATIONAL SYMBOLS

1/4" ENGRAVED PLASTIC - BLUE BACKGROUND WITH WHITE LETTERS



ENLARGED RESTROOM PLANS

SHEET NO.

A.13