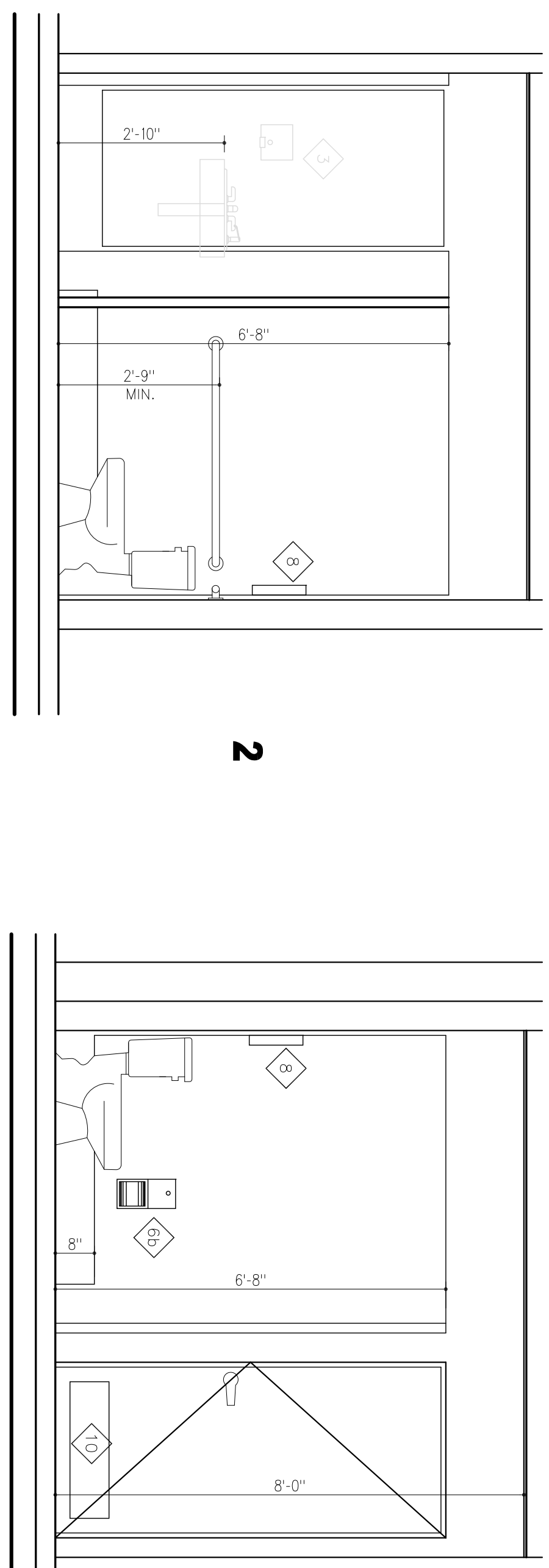
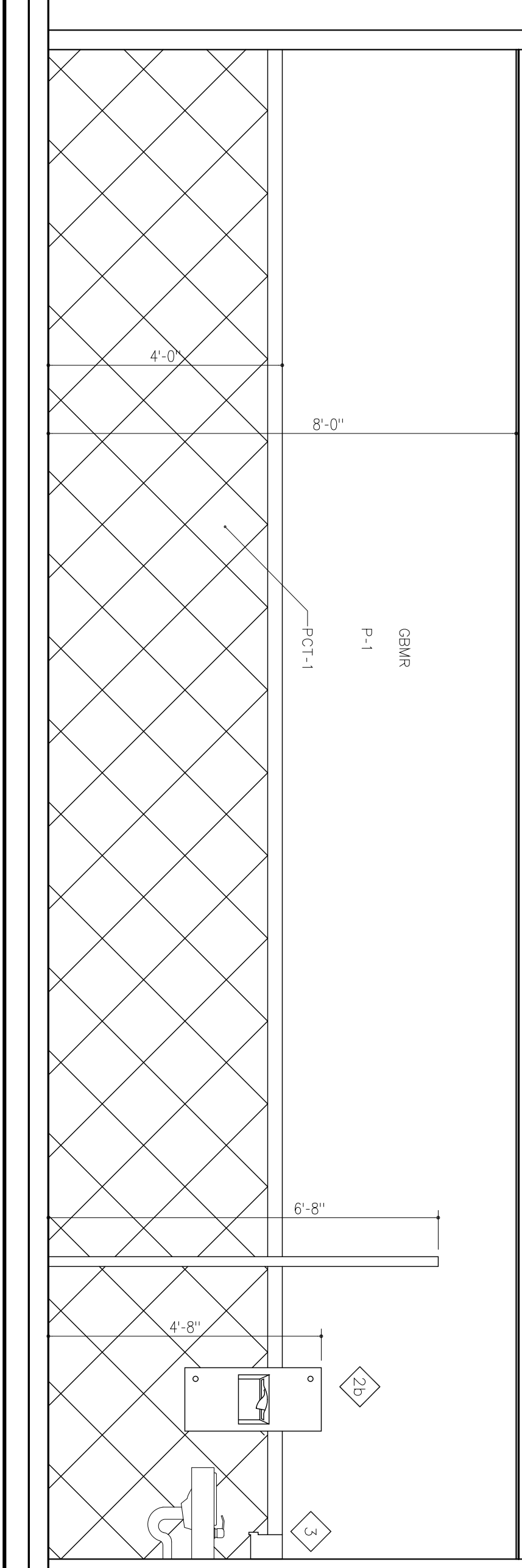


- 1**
- LEGEND
- 10 7 GAL. PAPER TOWEL DISPENSER AND WASTE RECEPTACLE (SURFACE MOUNTED 64678-9)
 - 11b 7 GAL. PAPER TOWEL DISPENSER AND WASTE RECEPTACLE (4" RECESSED 64678-2)
 - 20 1.8 GAL. PAPER TOWEL DISPENSER AND WASTE RECEPTACLE (SURFACE MOUNTED 64623-9)
 - 20 1.8 GAL. PAPER TOWEL DISPENSER AND WASTE RECEPTACLE (4" RECESSED 64623)
 - 3 HORIZONTAL SOAP DISPENSER (9343)
 - 4 BABY CHANGING STATION (SURFACE MOUNTED 9012)
 - 5 SANITARY NAPKIN/ZAMPON VENDOR (4" RECESSED 0448)
 - 6a DUAL ACCESS PARTITION MOUNTED DUAL TOILET PAPER DISPENSER (0032)
 - 6b SURFACE MOUNTED DUAL ROLL TOILET PAPER DISPENSER (0030)
 - 7 HEAVY DUTY UTILITY HOOK (1306)
 - 8 SURFACE MOUNTED TOILET SEAT COVER DISPENSER (64775W)
 - 9 MIRROR
 - 10 KICK PLATE



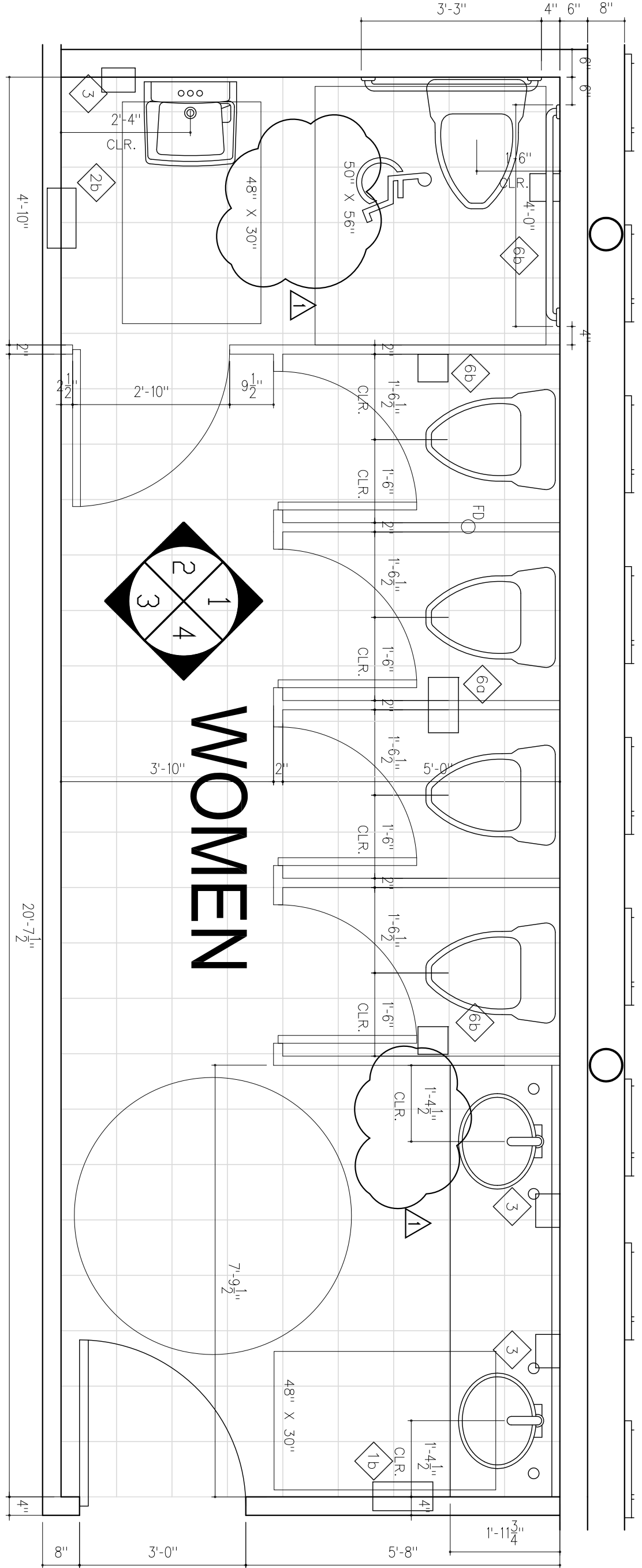
- 2**
- NOTES
1. ACCESSIBLE WATER CLOSET DEPTH IS 30 INCHES AND IT IS FLOOR MOUNTED TOILET STALL DOOR IS IN COMPLIANCE WITH FABRC AND ADA GUIDELINES
 2. TOILET ACCESSORIES TO BE APPROVED
 3. EDGE OF THE SELECTED SURFACE NO HIGHER THAN 40 INCHES ABOVE THE FINISH FLOOR
 4. ALL PIPES UNDER LAVATORIES SHALL BE INSULATED
 5. THERE SHALL BE NO SHARP OR ABRASIVE SURFACE UNDER LAVATORIES. ACCESSIBILITY TOILET STALL (COMPARTMENT) CAN BE 56" IN DEPTH IF YOU HAVE WALL MOUNTED WATER CLOSET. IF THE DEPTH OF A STANDARD WATER CLOSET MAY BE USED, WE RECOMMEND A DEPTH OF 60" (11.417.3)
 6. THEN A FLOOR MOUNTED WATER CLOSET MAY BE USED. FLOOR MOUNTED WATER CLOSET MAY BE USED. WE RECOMMEND A DEPTH OF 60" (11.417.3)
 7. SECTION THROUGH TOILET STALL TO LOCATE FLOOR AND WALL TILES ON SECTION BETWEEN THE FLOOR AND WALL SHALL BE COVERED. TILES ON WALLS SHALL BE INSTALLED TO A MIN. HEIGHT OF 4'-0" ABOVE THE FIN. FLOOR. DIMENSIONS TO LOCATE FLOORING FIXTURES ARE TO FINISHED SURFACE OF WALL



2

WOMEN RESTROOM ELEVATION BUILD. 1

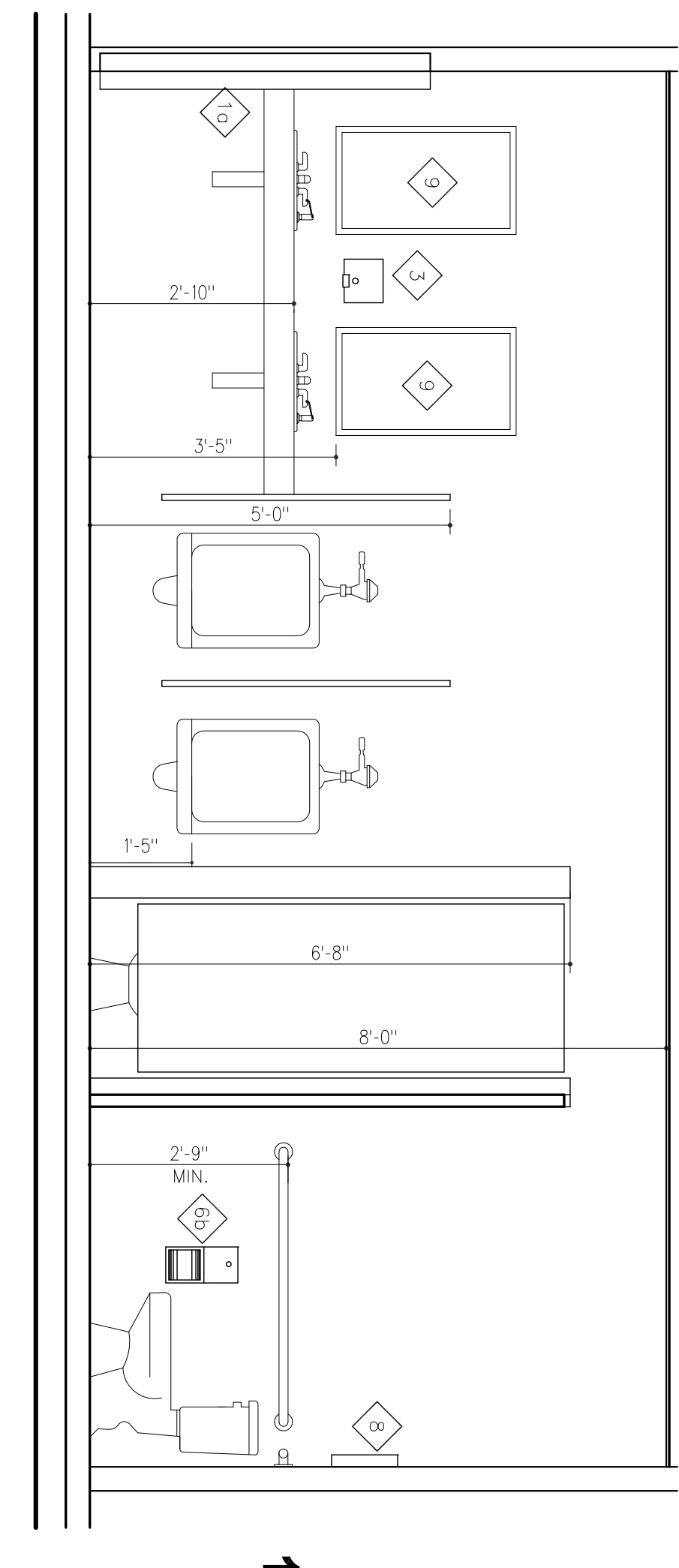
SCALE: 1/2" = 1'-0"



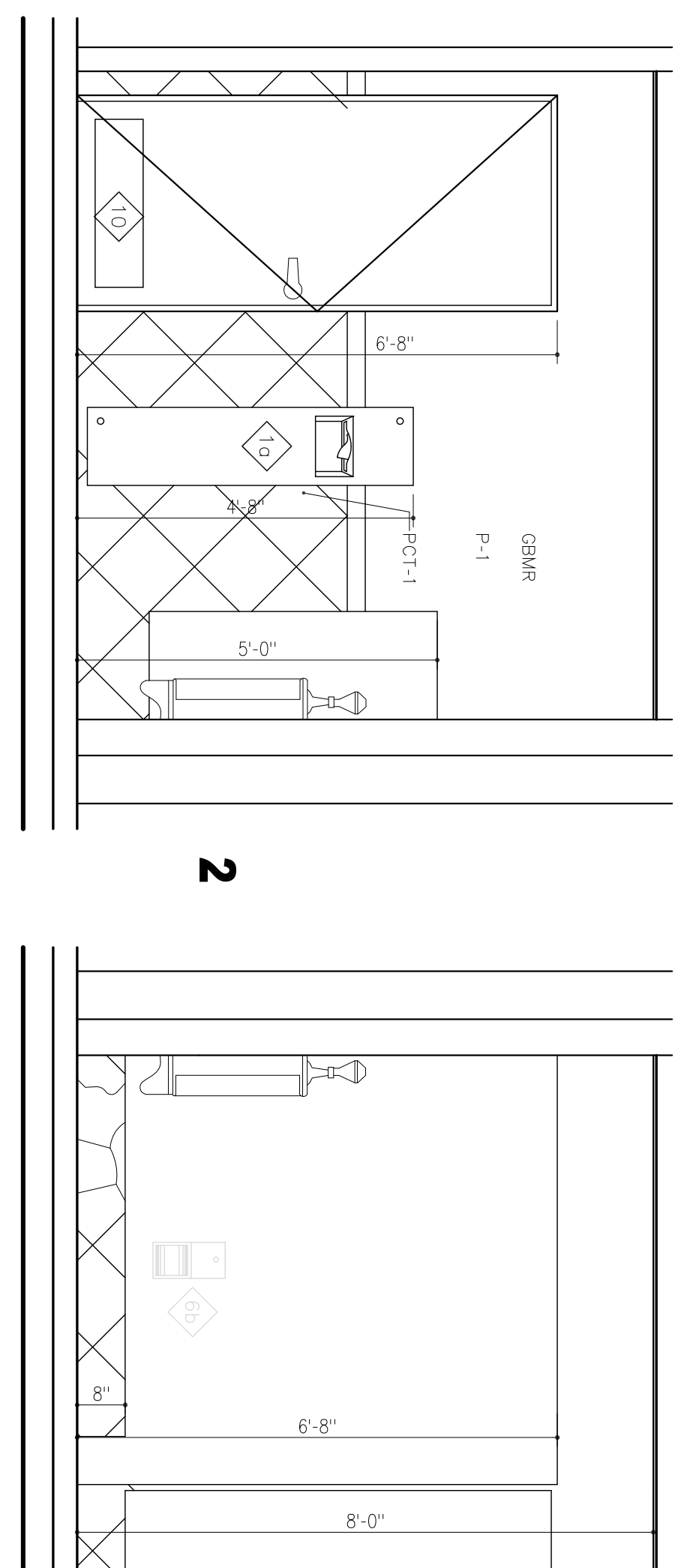
1

WOMEN RESTROOM BUILD. 1

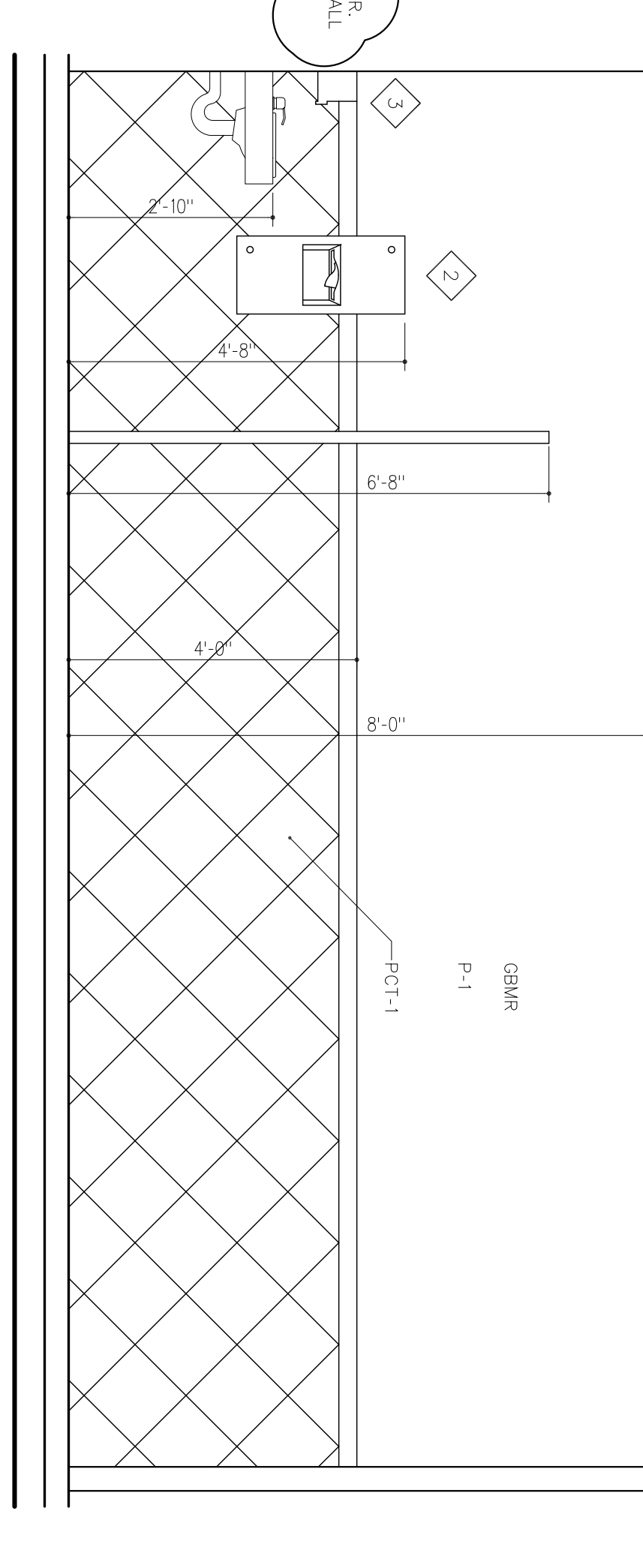
SCALE: 1/2" = 1'-0"



- 1**
- LEGEND
- 10 7 GAL. PAPER TOWEL DISPENSER AND WASTE RECEPTACLE (SURFACE MOUNTED 64678-9)
 - 11b 7 GAL. PAPER TOWEL DISPENSER AND WASTE RECEPTACLE (4" RECESSED 64678-2)
 - 20 1.8 GAL. PAPER TOWEL DISPENSER AND WASTE RECEPTACLE (SURFACE MOUNTED 64623-9)
 - 20 1.8 GAL. PAPER TOWEL DISPENSER AND WASTE RECEPTACLE (4" RECESSED 64623)
 - 3 HORIZONTAL SOAP DISPENSER (9343)
 - 4 BABY CHANGING STATION (SURFACE MOUNTED 9012)
 - 5 SANITARY NAPKIN/ZAMPON VENDOR (4" RECESSED 0448)
 - 6a DUAL ACCESS PARTITION MOUNTED DUAL TOILET PAPER DISPENSER (0032)
 - 6b SURFACE MOUNTED DUAL ROLL TOILET PAPER DISPENSER (0030)
 - 7 HEAVY DUTY UTILITY HOOK (1306)
 - 8 SURFACE MOUNTED TOILET SEAT COVER DISPENSER (64775W)
 - 9 MIRROR
 - 10 KICK PLATE



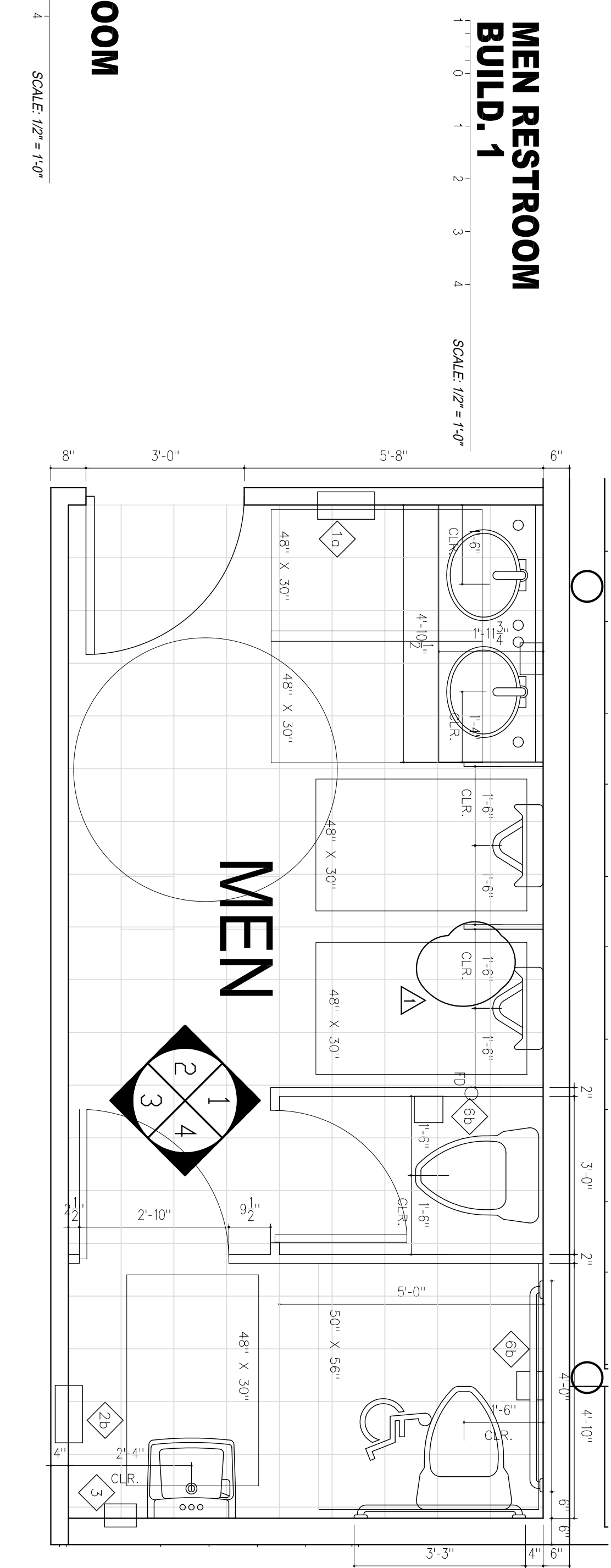
- 2**
- NOTES
1. ACCESSIBLE WATER CLOSET DEPTH IS 30 INCHES AND IT IS FLOOR MOUNTED TOILET STALL DOOR IS IN COMPLIANCE WITH FABRC AND ADA GUIDELINES
 2. TOILET ACCESSORIES TO BE APPROVED
 3. EDGE OF THE SELECTED SURFACE NO HIGHER THAN 40 INCHES ABOVE THE FINISH FLOOR
 4. ALL PIPES UNDER LAVATORIES SHALL BE INSULATED
 5. THERE SHALL BE NO SHARP OR ABRASIVE SURFACE UNDER LAVATORIES. ACCESSIBILITY TOILET STALL (COMPARTMENT) CAN BE 56" IN DEPTH IF YOU HAVE WALL MOUNTED WATER CLOSET. IF THE DEPTH OF A STANDARD WATER CLOSET MAY BE USED, WE RECOMMEND A DEPTH OF 60" (11.417.3)
 6. THEN A FLOOR MOUNTED WATER CLOSET MAY BE USED. FLOOR MOUNTED WATER CLOSET MAY BE USED. WE RECOMMEND A DEPTH OF 60" (11.417.3)
 7. SECTION THROUGH TOILET STALL TO LOCATE FLOOR AND WALL TILES ON SECTION BETWEEN THE FLOOR AND WALL SHALL BE COVERED. TILES ON WALLS SHALL BE INSTALLED TO A MIN. HEIGHT OF 4'-0" ABOVE THE FIN. FLOOR. DIMENSIONS TO LOCATE FLOORING FIXTURES ARE TO FINISHED SURFACE OF WALL



1

MEN RESTROOM ELEVATION BUILD. 1

SCALE: 1/2" = 1'-0"



1

MEN RESTROOM BUILD. 1

SCALE: 1/2" = 1'-0"