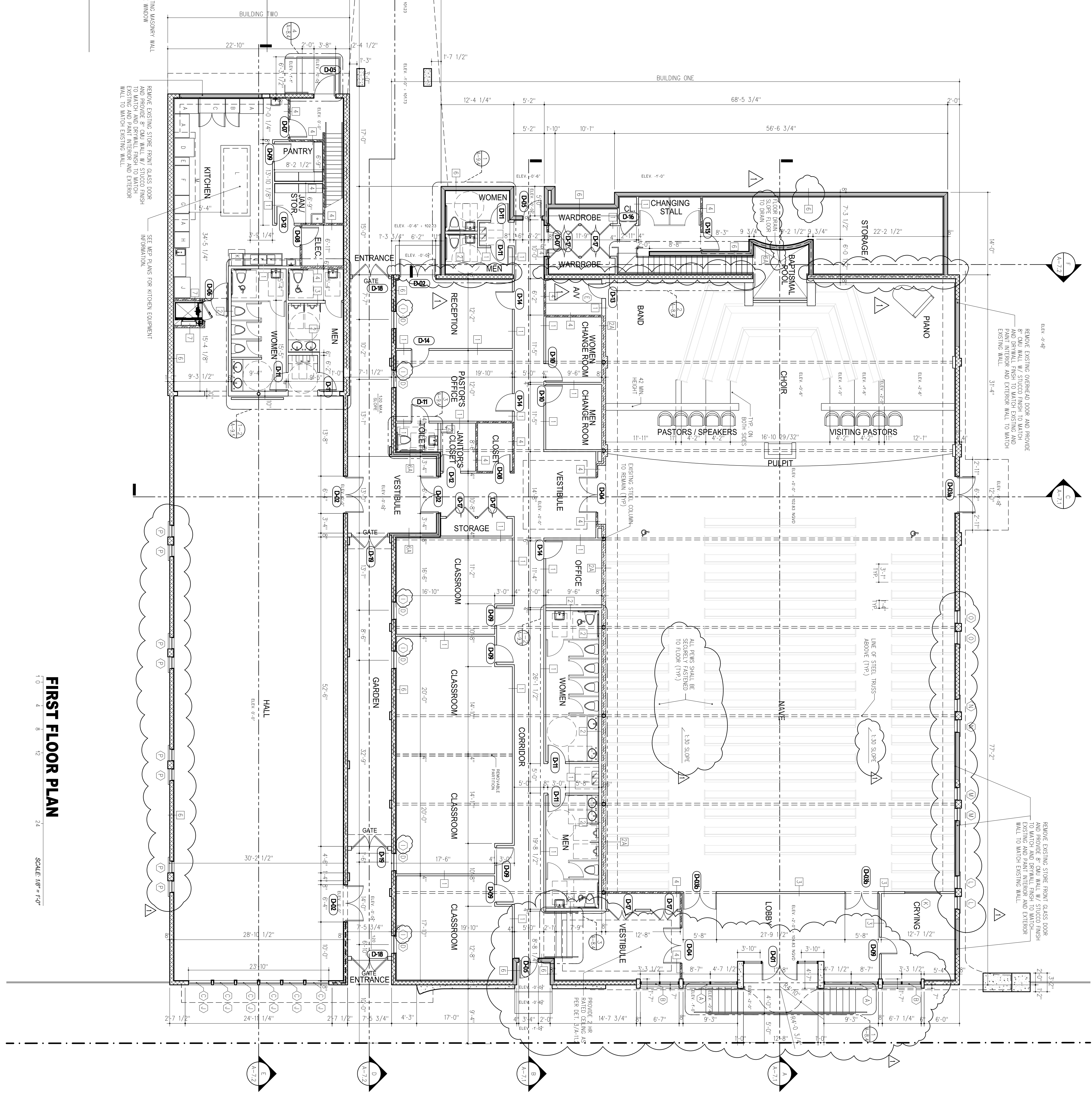


- KITCHEN LEGEND:**
- A- 48" WORK TABLE
  - B- FREEZER
  - C- 36" REFRIGERATOR
  - D- 36" SINK
  - E- 16" RHYER
  - F- 60" GRIDDLE
  - G- 36" RANGE
  - H- 32" HOLDING CAB
  - I- REFRIGER
  - J- DISH WASHER W/ HOOD
  - K- 54"2" CHEF'S TABLE

- WALL LEGEND:**
- 1 FULL HEIGHT (SEE DETAIL 1/A-10.3)
  - 2 FULL HEIGHT 8" CHASE PARTITION (SEE DETAIL 2/A-10.3)
  - 3 FULL HEIGHT 8" PLUMBING CHASE (SEE DETAIL 2/A-10.3)
  - 4 CEILING HEIGHT PARTITION (SEE DETAIL 3/A-10.3)
  - 5 FULL HEIGHT 2 HR. FIRE RATED PARTITION (SEE DETAIL 4/A-10.3)
  - 6 FULL HEIGHT 2 HR. FIRE RATED PARTITION (SEE DETAIL 5/A-10.3)
  - 7 FULL HEIGHT CONCRETE WALL (SEE DETAIL 6/A-10.3)
  - 8 FULL HEIGHT 2 HR. FIRE RATED PARTITION (SEE DETAIL 6/A-10.3)

INDICATES NEW CONCRETE MASONRY UNITS  
INDICATES EXISTING 1 1/2" RATED CMU WALLS (8") AS PER UL DESIGN 1995 (8" WALLS)  
INDICATES EXISTING CMU WALLS (8") AS PER UL DESIGN 1995 (8" WALLS)  
INDICATES 3-5/8" (10.3) METAL STUDS PARTITION 24" O.C. WITH 1/2" DRYWALL FINISH EACH SIDE. (SEE DETAIL 8/A-8.1)  
INDICATES 1 HR. RATED PARTITION AS PER UL 1419, 3-5/8" (10.3) METAL STUDS 24" O.C. WITH W/ ONE LAYER OF 1/2" Gypsum WALLBOARD ON BOTH SIDES OF STUDS AND APPROVED FIRE STOPPING AT TOP OF WALL TO ALLOW FOR SLAB DEFLECTION.  
INDICATES 2 HR. RATED PARTITION 3-5/8" (10.3) METAL STUDS 24" O.C. WITH W/ TWO LAYER OF 1/2" Gypsum WALLBOARD ON BOTH SIDES OF STUDS AND FRICTION FITTED MINERAL WOOL BATT. PROVIDE APPROVED FIRE STOPPING AT TOP OF WALL TO ALLOW FOR SLAB DEFLECTION.  
NOTE: CONTRACTOR SHALL IDENTIFY ALL FIRE RATED WALLS WITH A SIGN. SIGNS SHALL BE LOCATED ABOVE CEILING AND IN OTHER CONCEALED SPACES AT 10' O.C. AND SHALL READ "FIRE AND SMOKE BARRIER-PROTECT ALL OPENINGS".



**A-3**

**REVISIONS:**  
Always/Always/Always/Always

**FLOOR PLAN**  
ORANGE BLOSSOM TRAIL  
ORLANDO, FLORIDA

**FIRST HAITIAN FREE CHURCH OF NAZARENE**

First Haitian Free Church of Nazarene by Faith  
ORLANDO, FLORIDA

RAMOSMARTINEZ ARCHITECTS INC.

**RAMOSMARTINEZ ARCHITECTS, INC.** AA 26000528  
MIAMI: 12th AVENUE, MIAMI, FL 33136  
TELEPHONE: 305-548-3008  
FACSIMILE: 305-548-3220  
WEBSITE: www.rmq.com  
NEW YORK: ERNE STREET, JERSEY CITY, NJ 07302