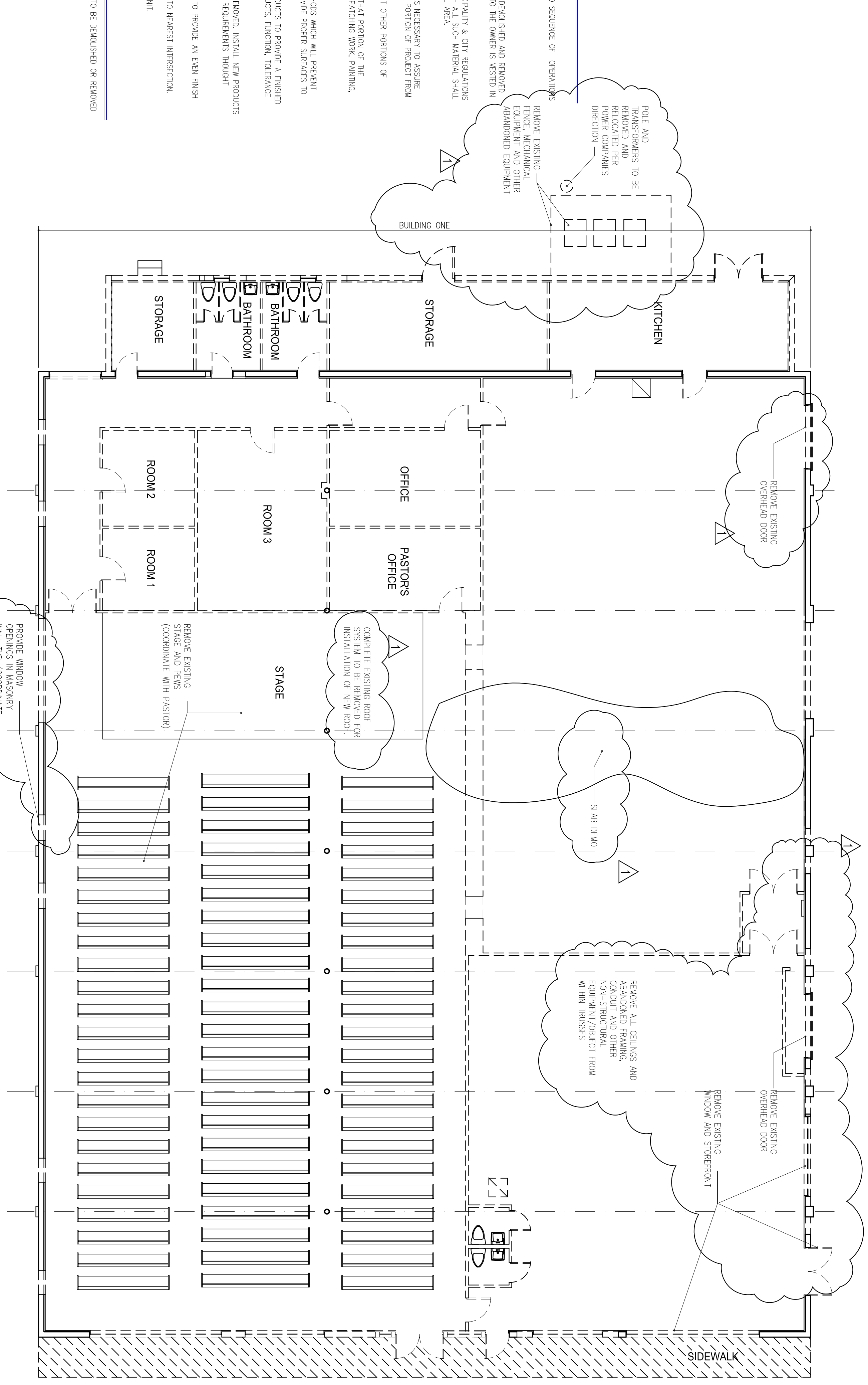


DEMOLITION FLOOR PLAN

1. CONDITIONS AND REQUIREMENTS:
 - A. THE DEMOLITION CONTRACTOR SHALL BE RESPONSIBLE FOR THE REMOVAL AND DISPOSAL OF ALL MATERIALS TO BE DEMOLISHED OR REMOVED. THE CONTRACTOR SHALL BE RESPONSIBLE FOR OBTAINING ALL NECESSARY PERMITS AND APPROVALS FROM THE LOCAL, STATE AND FEDERAL AGENCIES. THE CONTRACTOR SHALL BE RESPONSIBLE FOR THE PROTECTION OF ALL ADJACENT PROPERTIES AND UTILITIES. THE CONTRACTOR SHALL BE RESPONSIBLE FOR THE PROTECTION OF ALL ADJACENT PROPERTIES AND UTILITIES. THE CONTRACTOR SHALL BE RESPONSIBLE FOR THE PROTECTION OF ALL ADJACENT PROPERTIES AND UTILITIES.
2. PROTECTION OF ADJACENT PROPERTIES AND UTILITIES:
 - A. THE CONTRACTOR SHALL BE RESPONSIBLE FOR THE PROTECTION OF ALL ADJACENT PROPERTIES AND UTILITIES. THE CONTRACTOR SHALL BE RESPONSIBLE FOR THE PROTECTION OF ALL ADJACENT PROPERTIES AND UTILITIES. THE CONTRACTOR SHALL BE RESPONSIBLE FOR THE PROTECTION OF ALL ADJACENT PROPERTIES AND UTILITIES.
3. PARTITION: REMOVE ALL EXISTING INTERIOR PARTITIONS AND RELATED UTILITIES AS INDICATED IN THE DEMOLITION PLAN.
4. DUST CONTROL: THE AMOUNT OF DUST RESULTING FROM DEMOLITION SHALL BE CONTROLLED TO PREVENT THE SPREAD OF DUST TO ADJACENT AREAS. THE CONTRACTOR SHALL BE RESPONSIBLE FOR THE PROTECTION OF ALL ADJACENT PROPERTIES AND UTILITIES. THE CONTRACTOR SHALL BE RESPONSIBLE FOR THE PROTECTION OF ALL ADJACENT PROPERTIES AND UTILITIES.
5. PROTECTION OF EXISTING BUILDING:
 - A. EXISTING BUILDING SHALL BE PROTECTED FROM DAMAGE. ANY PART DAMAGED BY THE CONTRACTOR SHALL BE REPAIRED TO MATCH EXISTING CONDITIONS AND FINISHES.
 - B. COVER TIES AS NECESSARY TO PROTECT FROM DUST.
 - C. AT END OF EACH WORK DAY, CLOSE OFF AREAS FROM PUBLIC.
 - D. DEMOLITION CONTRACTOR SHALL PROVIDE AND MAINTAIN NECESSARY PROTECTION TO PREVENT DAMAGE TO ADJACENT PROPERTIES AND UTILITIES. THE CONTRACTOR SHALL BE RESPONSIBLE FOR THE PROTECTION OF ALL ADJACENT PROPERTIES AND UTILITIES.
6. ENVIRONMENTAL PROTECTION: ALL WORK AND CONTRACT OPERATIONS SHALL BE CONDUCTED IN ACCORDANCE WITH ALL REQUIREMENTS OF STATE AND ENVIRONMENTAL PROTECTION AGENCIES.
7. EXPLOSION AND BURNING:
 - A. USE OF EXPLOSIVES WILL NOT BE PERMITTED.
 - B. USE OF FIRE FOR DEMOLITION OR DISPOSAL OF MATERIAL OR ANY OTHER SITUATION INTENTIONAL OR ACCIDENTAL WILL NOT BE PERMITTED.
8. EXISTING UTILITIES:
 - A. REMOVE ALL EXISTING UTILITIES ACCORDING TO SEQUENCE OF OPERATIONS APPROVED AT START OF PROJECT.
9. DISPOSING OF MATERIAL:
 - A. TITLE TO ALL MATERIAL AND EQUIPMENT TO BE DEMOLISHED AND REMOVED SHALL BE TRANSFERRED TO THE CONTRACTOR AT START OF PROJECT.
 - B. REGULATIONS GOVERNED BY COUNTY, MUNICIPALITY & CITY REGULATIONS SHALL BE FOLLOWED. ALL MATERIAL AND EQUIPMENT TO BE DEMOLISHED AND REMOVED SHALL BE DISPOSED OF OFF SITE IN A LEAD DISPOSAL AREA.
10. PREPARATION:
 - A. REMOVE ADEQUATE TEMPORARY SUPPORT AS NECESSARY TO ASSURE STRUCTURAL INTEGRITY OF AFFECTED PORTION OF PROJECT FROM DAMAGE.
 - B. REMOVE DEBRIS AND METHODS TO PROTECT OTHER PORTIONS OF PROJECT FROM DAMAGE.
 - C. PROVIDE PROTECTION FROM ELEMENTS FOR THAT PORTION OF THE PROJECT WHICH MAY BE EXPOSED BY CUTTING, PATCHING WORK, PAINTING, APPLY SHEETROCK, FINISHES, DUST & NOISE.
11. PERFORMANCE:
 - A. EXECUTE CUTTING AND DEMOLITION BY METHODS WHICH WILL PREVENT DAMAGE TO OTHER WORK, AND WHICH WILL PROVIDE PROPER SURFACES TO RECEIVE INSTALLATION OF REPAIRS.
 - B. EXECUTE FITTING AND ADJUSTMENT OF PRODUCTS TO PROVIDE A FINISHED INSTALLATION TO COMPLY WITH SPECIFIED PRODUCTS, FUNCTION, TOLERANCE AND FINISHES.
 - C. RESTORE WORK WHICH HAS BEEN CUT OR REMOVED. INSTALL NEW PRODUCTS TO PROVIDE COMPLETED WORK IN ACCORD WITH REQUIREMENTS THROUGH DOCUMENTS.
 - D. FINISH ENTIRE SURFACES AS NECESSARY TO PROVIDE AN EVEN FINISH TO MATCH ADJACENT FINISHES.
 - 1. FOR CONTINUOUS SURFACES, FINISH TO NEAREST INTERSECTION.
 - 2. FOR AN ASSEMBLY, FINISH ENTIRE UNIT.

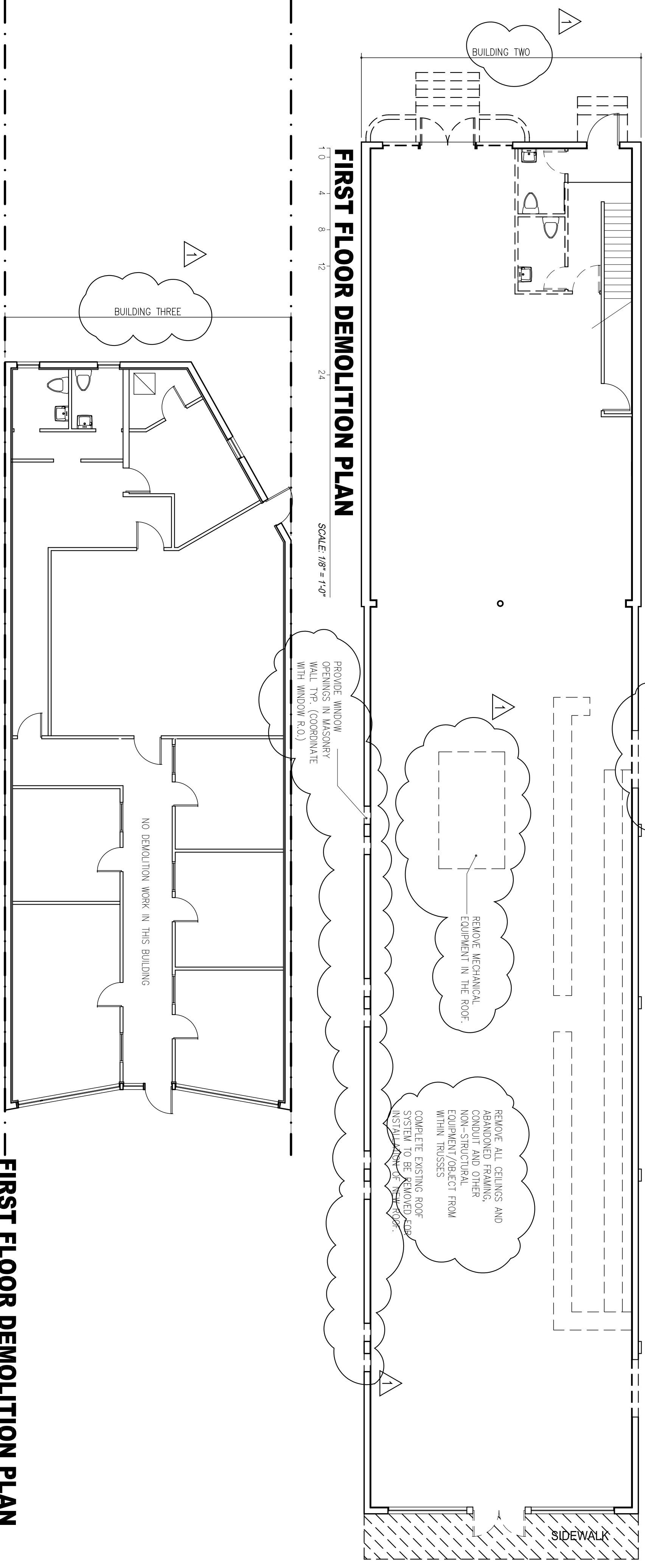
WALL LEGEND:

--- INDICATES EXISTING PARTITION/ITEM TO BE DEMOLISHED OR REMOVED



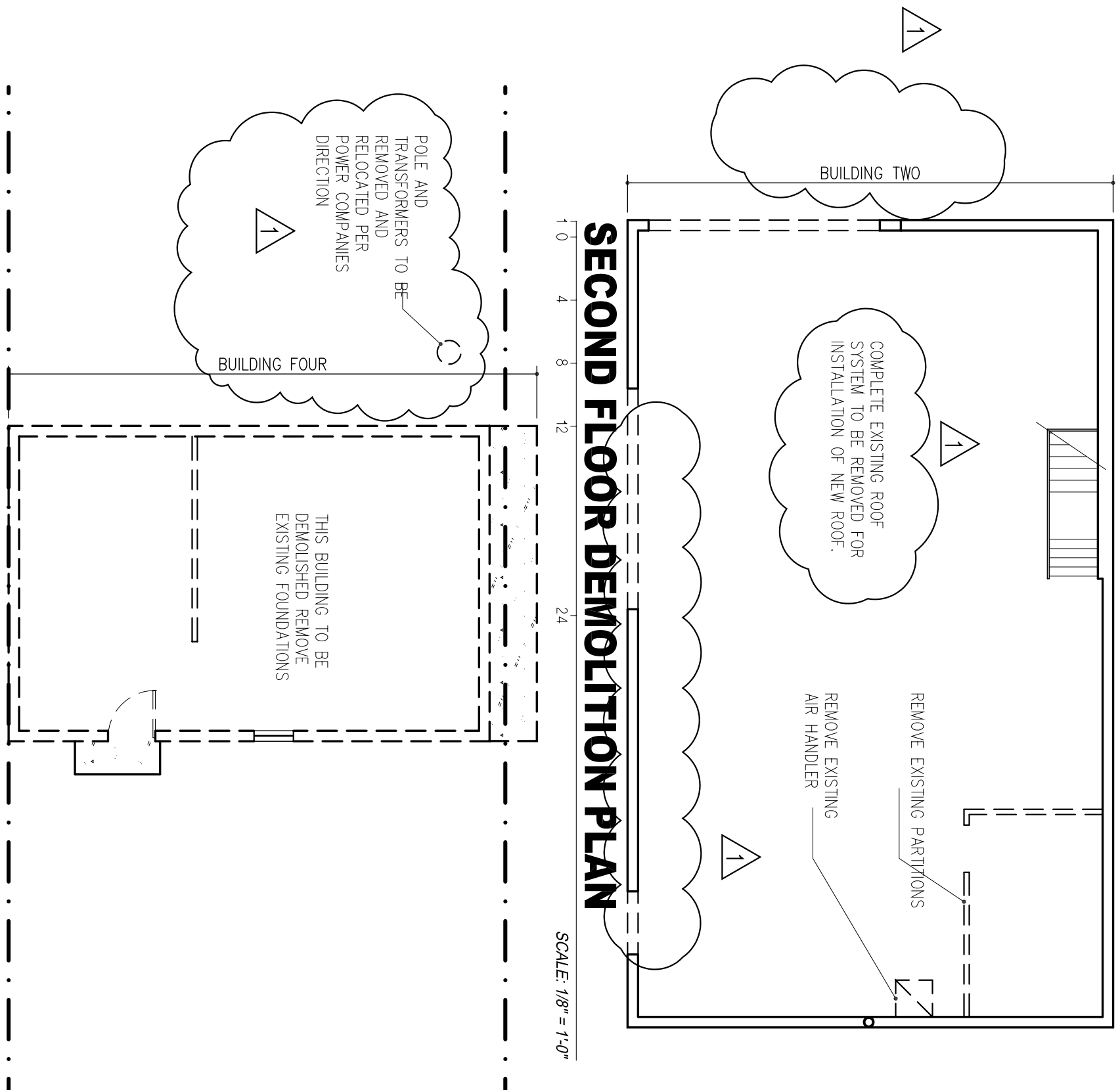
FIRST FLOOR DEMOLITION PLAN

SCALE: 1/8" = 1'-0"



SECOND FLOOR DEMOLITION PLAN

SCALE: 1/8" = 1'-0"



FIRST FLOOR DEMOLITION PLAN

SCALE: 1/8" = 1'-0"

FIRST HAITIAN FREE CHURCH OF NAZARENE

First Haitian Free Church of Nazarene by Faith
ORLANDO, FLORIDA

RAMOSMARTINEZ ARCHITECTS, INC.
MIAMI: 305-548-3208
NEW YORK: 201-529-3208

A-2
DATE: 07 MAY 2008
DRAWN BY: [Name]
CHECKED BY: [Name]